



Priest in Charge

Bournemouth St. James Pokesdown



DIOCESE of
WINCHESTER

St. James' Church
POKESDOWN



TABLE OF CONTENTS

TABLE OF CONTENTS	2
WELCOME	3
Diocese of Winchester	3
Bournemouth Deanery.....	4
INTRODUCTION	5
OUR VISION	6
OUR CHURCH LIFE	8
St. James.....	8
Support Teams.....	8
Worship	9
Congregation	10
Community Events	11
East Cliff Pre-School.....	11
St. James' Church of England Primary Academy	12
Communication	13
FINANCE	13
THE VICARAGE.....	14
ROLE DESCRIPTION.....	15
HOW TO APPLY	17



WELCOME

Diocese of Winchester

Welcome to this parish profile and role description and,

Welcome to the Diocese of Winchester!

At the heart of our life here is a desire to be always Living the Mission of Jesus. We are engaged in a strategic process to deliver a mission-shaped Diocese, in which parochial, pastoral and new forms of pioneering and radical ministry all flourish. Infused with God's missionary Spirit we want three character traits to be clearly visible in how we live:

- Passionate personal spirituality
- Pioneering faith communities
- Prophetic global citizens

The Diocese of Winchester is an exciting place to be at the moment. We wait with eager anticipation to see how this process will unfold. We pray that, if God is calling you to join us in his mission in this part of the world, he will make his will abundantly clear to you.

'As the Father sent me so I send you ... Receive the Spirit.'

John 20:21

Read more about [Winchester Mission Action Planning](#) here.



Debbie Sellin

Bishop of Southampton



Bournemouth Deanery



A very warm welcome to Bournemouth Deanery and thank you for expressing an interest in the post of Priest in Charge at St. James. Whilst we are biased, this is an amazing place to minister and live. On our doorstep there are miles of award-winning coastline and beaches as well as the New Forest and good public transport links further afield. Bournemouth is a vibrant and diverse town which has changed significantly in recent years with the growth and success of the university. The deanery is the most westerly in the Diocese of Winchester and borders the Salisbury Diocese.

We are looking to forge stronger links with Poole and North Bournemouth Deanery in the Salisbury Diocese. Bournemouth Deanery is not

geographically large and has a breadth of church traditions serving the people of the town as we seek to Live the Mission of Jesus and serve those who live, study and work here.

There are, of course, challenges to be faced as a result of the pandemic and pastoral reorganisation but it is also an exciting time of change. The new Priest in Charge of St. James has an opportunity to build on the current ministry and mission of the parish with a whole host of opportunities such as a primary school sharing the church site and a successful, well established Pre-School with which the church has strong links. I very much hope that the new incumbent of St. James will be able to play an active part in the wider deanery as we seek to work together, support and resource each other.

Thank you for expressing an interest in applying for this post at a really important time in the parish's and deanery's life. We very much look forward in welcoming whoever is appointed at this time of change and development across the deanery.

We look forward to receiving your application but if there is anything you'd like to ask please get in touch.



Michael Smith

Area Dean of Bournemouth

INTRODUCTION



Welcome to [St. James](#), we are a congregation in the liberal catholic tradition ('middle of the road') and proud members of Inclusive Church situated in east Bournemouth. The beach at Southbourne and Boscombe is close by and AFC Bournemouth (with its return to the Premier League a hope) is within the parish and only a short walk away.

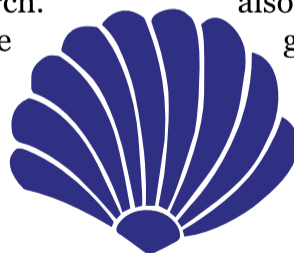
We share our site with [St James' Church of England Primary School](#), a two form entry school and [East Cliff Pre-School](#), with both of whom we have an excellent relationship.

Bournemouth is located on the south coast in the county of Dorset and is between Poole and the historic Priory town of Christchurch. The parish is adjacent to Southbourne which has a lively cluster of brewpubs, cafes, and restaurants.

It is within easy reach of the New Forest, the Isle of Purbeck and the Jurassic Coast and is well known for its seven miles of golden sands.

There are excellent train links to London. Bournemouth International Airport offers flights to Europe and there are ferry links to France and the Channel Islands from Portsmouth and Poole.

The area of Pokesdown is between Christchurch and Boscombe and the parish falls within an area which is mainly residential, ranging from social housing to detached properties. In close proximity of the church are a number of schools, both secondary and primary. The town also has a university and both boys and girls grammar schools.





OUR VISION

Yes, we would like the new appointment at St. James to help our church grow. Growing doesn't automatically make us fixate on getting 'bums on seats' although in order to fulfil some of the opportunities that present themselves, more people in the congregation would be good.

Growing can mean thinking and organising what we do in a flexible way so that we can put new ideas into practice. We are looking to proclaim the gospel not just with words but with actions.

Jesus says, 'Whatever you do to others, you do to me.' How we treat other human beings is how we treat Jesus. Our church is welcoming, friendly and encouraging to all people. We have nailed that view by being alongside other churches in Bournemouth who belong to 'Inclusive Church'.



Guiding the Little Ones



Kidz Worship

It is probably glaringly obvious, but when we have a large number of children, including Scouts and Girlguiding Units, at our family service, we also get to meet their families and friends. By offering a relaxed service which has songs and hymns people know and also drama by our Kidz Worship team it has a good atmosphere and friendly vibe. We explore the gospel in a meaningful way that chimes with all the issues that now confront our world.

We have many opportunities to enrich our links with St. James' Church of England Primary Academy and the Pre-School which are fortunately on our doorstep. The footfall of parents and children who pass the church to go to school is great and engaging with them in imaginative ways, reaching out beyond the church building, being visible and accessible is opportunity knocking.



Uniformed Groups



OUR VISION



“The greatest thing in this world is not so much where we stand as in what direction we are moving.”
(Goethe)

Thinking outside the box, we know that church isn't just about Sunday mornings. As we have already indicated, lots of opportunities to take church beyond that idea are possible.

Communicating the gospel in a modern way means being open to changing the way we worship. Actually, that is already happening at St.

James as our services are led in many different ways by the clergy who come to our church during the vacancy. We are open to different styles of worship and can adapt our services so that they are attractive to people who come to church for the first time for a baptism or wedding.

We are on a learning curve which we are embracing via the gospel, understanding and committing to its message about pouring our faith into action.



Prayers by the children



Kidz Worship Leaders Performing

The mission for all churches and for everyone's future means being strong in faith and encouraging others to know the love of Christ, therefore everyone matters, everyone is welcome, and everyone is loved.



No barriers and no exceptions are acceptable. That is the spirit of a good community making its presence felt and we can commit to that. We welcome the opportunity to work alongside a Priest in Charge and to fulfil, as best we can, the mission of Jesus Christ.



OUR CHURCH LIFE

St. James

The church was originally built to a design by G.E. Street in 1858, providing seating for a congregation of approximately 80 people. This quickly proved inadequate as the community grew rapidly, and two phases of expansion at the turn of the century and in the 1920s increased the seating to approximately 250. It is a Grade 2 listed building and its ancillaries are in good repair. The Sacristy (also doubling as a meeting room for small groups) was added in 1958. We benefit from having a very flexible worship space with comfortable seating and an area for post-service coffee and other social activities.



St. James' Church, South Door



The Altar at St. James

Attached to the church is a community hall (built in 1995) with a capacity of 100 people and is used by the Pre-School five days a week. The annexe was added to the church in 1968 with a capacity of 30 and includes a small servery. These halls are regularly used by Alcoholics Anonymous, all Uniformed Groups and other community organisations including a dementia-friendly Memory Lane Café who meet monthly. Both halls are also available for private hire.

Support Teams

Our ministry team of retired Priest, Canon Pam Schollar (SSM) and one Licensed Lay Minister, Sheila Munnery, supports the life and worship of the church. We are also fortunate to have a resident organist.

There are small teams of volunteers supporting the work of St. James'. The Fabric Team carry out general maintenance and repairs as required and the Pastoral Team looks after the welfare of our congregation, carrying out home visits when required. More formal volunteers include the Parochial Church Council (PCC) and the current Churchwardens Val Lakey and Carolyn Allen who are supported by four Deputy Wardens.

Situated adjacent to the Lady Chapel with external and internal access is a good sized Parish Office. A Parish Administrator is employed on a part time basis in the Parish Office, and the role is an important part of the delivery of the day to day needs of the parish. Further details about the members of the Support Teams can be found on our [website](#).



OUR CHURCH LIFE

Worship

Our Sunday 10am service is a traditional Eucharist. On the first Sunday of the month we hold a non-eucharistic service when Kidz Worship, the Scallopinis children choir and the band play a large part. During term time the uniformed groups will parade. Also on the first Sunday of the month we hold an afternoon Eucharist. After the morning services we catch up on chit chat over tea and coffee at the back of church.



View from the Pulpit



WW1 Memorial Cross

Harvest Festival a busy family service bringing gifts which are then distributed to the local Food Bank. After the service we all enjoy a light lunch. We host both School and Pre-School harvest services during the week.

All Souls a reflective service with music and readings for all who have been bereaved.

Remembrance Service is our biggest service of the year. Over 170 attended in 2021 including Uniform groups parade and culminating in the laying of wreaths and sounding of the last post around the War Memorial.

In December, the tree goes up and the church is decorated ready for **Carols by Candlelight**, the **Crib Service** and **Christmas Day**. Before end of term the School hold their Carols by Candlelight and the Pre-School, with children and parents, hold a short service around the crib. All money collected at these services is donated to a charity and this year to BCARS (Bournemouth Christians Alongside Rough Sleepers).

Christingle we celebrate at Epiphany, a popular service with everyone receiving a Christingle orange. (Pre pandemic everyone made their own Christingle orange very messy but good fun). Tea/coffee and cake served afterwards with all money raised donated this year to The Children's Society (£220).



Crib in front of the Altar



OUR CHURCH LIFE



The importance of music in worship



Congregation

The family of St. James is made up of all age groups from the very young to the very old, and new faces continue to appear. We greet many families who come to us for baptisms which we like to hold during the service making them feel truly part of the church family.

Due to lockdowns, our weekly Kidz Worship and monthly Dads & Kids sessions ceased and have yet to be re-established.

Our Electoral Roll stands at 101. Following these COVID years our worshipping community averages 50 and the family service up to 70.



Scallopini Choir

Lent weekly study groups, at church or in homes, and last year we held very successful zoom courses.

Mothering Sunday another popular service with all ladies receiving a small posy.

Easter. During Holy Week we hold Compline, Maundy Thursday and Good Friday services. Easter Day begins with a Sunrise Communion on the beach warming up with hot drinks and bacon butties. Then a wonderful celebration at 10am with an Easter Egg hunt for the children.

St. Jamestide, our Patronal Festival service, is followed by a BBQ in the church grounds.



Catching up over coffee after the service

In response to a recent questionnaire, the congregation felt there was a “true sense of belonging”, “a beautiful well kept, and very much used, church” “offering a warm welcome” and creating a “friendly atmosphere”.



OUR CHURCH LIFE

Community Events

Two major events are normally held each year. We share a Summer Fayre with the School and hold our own Autumn/Christmas Fayre. St. James' is not a wealthy community and has no endowments. Income comes from direct giving and hall lettings. Missionary giving is supplemented by annual fund-raising efforts.



A broad community



Memory Lane Café in the Annexe

East Cliff Pre-School

The Pre-School has been a part of our church for over 25 years and last year, following the death of the owner, is now under new ownership and we are pleased to report that the close working relationship continues. We welcome them into church for short services at Harvest, Remembrance, Christmas and Easter and much appreciate their offerings of paintings, collages, action songs and dances.



Pre-School Nativity

Be open to accepting families from a variety of cultural and religious beliefs as part of activities held within the church

Someone who is keen on encouraging families to be part of the church, and actively encourage their involvement in the wider community

To be approachable and willing to get down on one knee to interact with the smallest of our community

Some characteristics desired by the Pre-School of the Priest in Charge...



Pre-School Nativity



OUR CHURCH LIFE

St. James' Church of England Primary Academy



The church has a close relationship with the school who use the church for all major services (Harvest, Christmas and Easter), staff eucharists and meetings at the beginning of each term and also for workshops and extra curriculum activities. A number of the congregation have been involved in helping the children with their maths and reading.

St. James' is a Church of England Primary Academy in the Diocese of Chichester Academies Trust where pupils and staff work together in the knowledge and love of God. We try to act out our faith in our daily lives, with Christ as our example. We see education as an integral part of the mission of the Church to proclaim all that is good in human living, inspired through the work of God.

“ The link between the church and the school is vital. We provide an essential community link for families and the role of the incoming vicar would be to maintain and enhance those close links.

We would love to welcome them into school and be welcomed into church for regular worship, and also, to use the church building for curriculum learning. ”

***Deputy Headteacher and
Designated Safeguarding Lead***



Meeting the Congregation



Harvest Distribution



Learning about Baptism



Building a timeline



OUR CHURCH LIFE

Communication

Website www.stjamespokesdown.co.uk

Facebook www.facebook.com/stjameschurchpokesdown

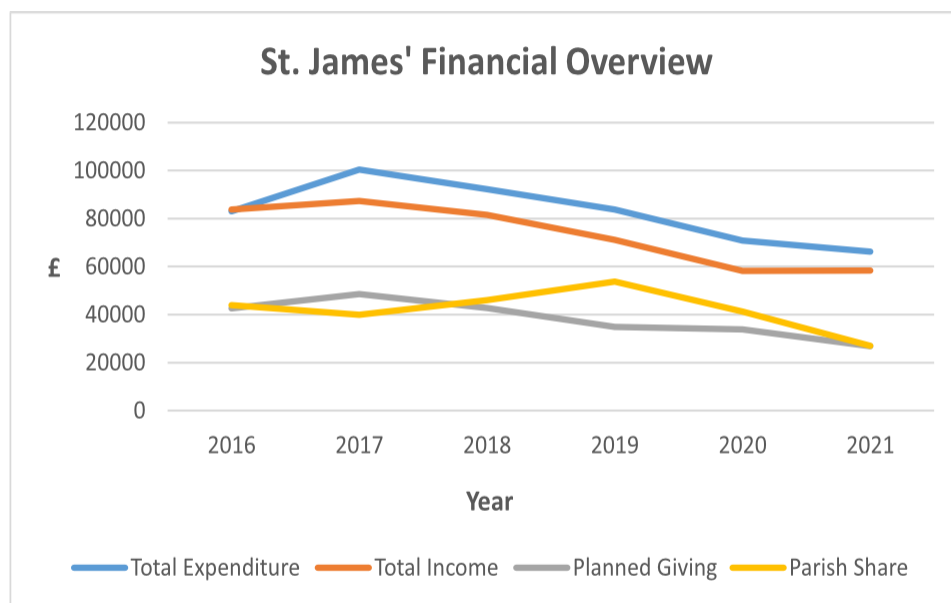
'Nevertheless' a weekly news sheet giving details of forthcoming services and events and includes the readings and prayers for our Sunday service. It is also circulated via email to our wider church community.

Banners are displayed on the roadside fencing for special events and posters displayed in our four noticeboards around the church.

During the difficult years the sense of community which is alive in the church was supported by technology savvy members who set up a daily WhatsApp chat group, weekly zoom quizzes and online Sunday services from the vicarage co-ordinating music and songs from isolated members and plays created by Dads & Kids and the Kidz Worship team.

FINANCE

The PCC meets 7 times a year and Finance and Safeguarding are permanently on the agenda for discussion. We also hear reports from sub-committees including Ministry, Fabric, Pastoral and Social.



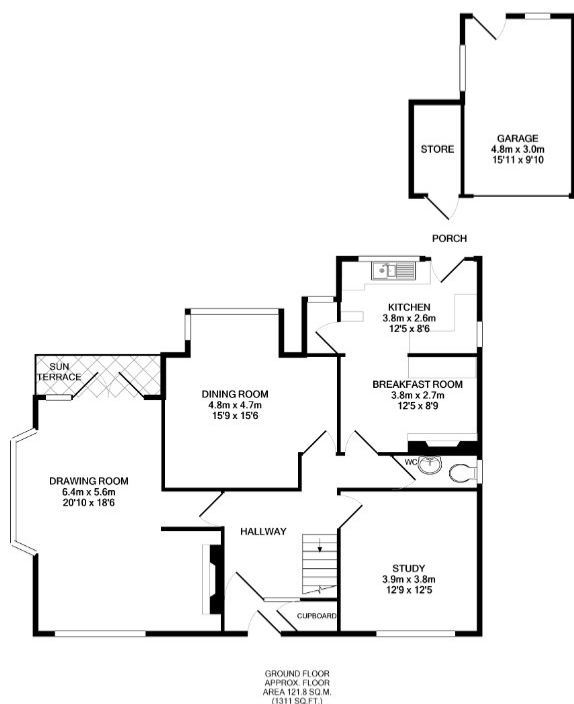


THE VICARAGE

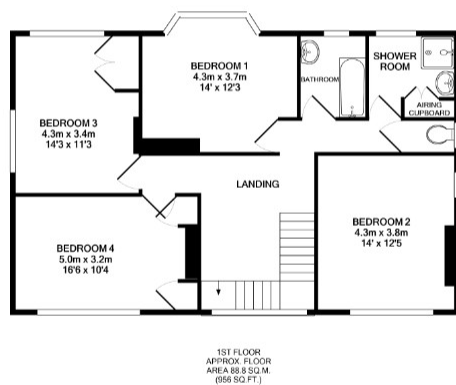
The Vicarage, 12 Harewood Avenue, is a large family house only a five minute walk from the church. It provides a large lounge, good study and a dining room, kitchen/breakfast room, four large bedrooms and a box room. There is a substantial garage, small outhouse and garden shed set in a good sized garden with parking for several cars at the front.



Vicarage, front view



Vicarage, Ground Floor Plan



Vicarage, First Floor Plan



Vicarage, garden



Vicarage, rear view



ROLE DESCRIPTION

We are looking for a Priest in Charge who will ...

Spirituality

- Enjoy scripture and is keen to share her/his personal faith in Jesus Christ.
- Be a leader who loves and cares for the parish and deepen the commitment, spirituality, and discipleship of the congregation.
- Embrace us as a member of an inclusive church relating to people of all ages, ethnicity, and social background.
- Be compassionate and caring to those in need.

Worship and Preaching

- Retain our tradition of liberal Anglo-Catholic worship and support lay ministry and the Kidz Worship team.
- Continue and enhance our mix of services from formal eucharists to family services.
- Appreciate the place music, singing and drama has in worship. Support and encourage the Scallopinis children's choir, the band and Kidz Worship.
- Deliver sermons in a practical, thought-provoking way. Keep it simple, make it personal, reflect the heart and share experiences which we understand and that will appeal to all.

Leadership and Collaboration

- Be comfortable working in a team and with volunteers and will prioritise collaboration with the Ministry Team, Churchwardens and PCC.
- Can identify and discern the gifts and skills in others and help to develop these.
- Maintain a good working relationship with the staff of both the St. James' Primary Academy and the Pre-School, bringing the schools and church closer together.

Discipleship, Learning and Nurture

- Engender a sense of belonging by encouraging participation in services making use of the congregation's talents.
- Have a passion and enthusiasm for nurturing the needs of children, young families and newcomers, many of whom have no previous experience of church.
- Nurture the needs of our more mature congregation in fellowship and learning.
- Promote study groups both personally and online.



ROLE DESCRIPTION

Evangelism and Social Engagement

- Grow the witness of St. James in the local community
- Take an active role in our school communities, including assemblies and services.
- Welcome and engage with parents and children (around 500 every day in term time) reaching out beyond the church building, being visible and accessible.
- Reach out to all six of the uniform groups encouraging them to feel part of the church family.
- Understand and participate in the use of communication technology including the Website and Facebook.

Pastoral Care

- With help and support of the Pastoral Team, make contact with those needing help and care within the church family extending to the wider community.

Stewardship, Finances and Parish Organisation

- Have a knowledge of the financial implications and constraints of parish life and an ability to deal effectively with administration with help from the Parish Administrator.
- Encourage understanding of what stewardship means and the importance of planned giving.
- Welcome the many groups and organisations who hire our facilities, without whom we would struggle financially.

Ecumenism & Links With Other Bodies

- Sustain our focus on inclusivity and social justice.
- Support the ecumenical initiatives in the town and deanery.
- Work in close conjunction with the Area Dean and participate in Chapter meetings.

Personal Welfare

We know there will be many demands on your time, and it is important that you take time away from these pressures to safeguard your health and the wellbeing of your relationships with those close to you. As a minimum, you should plan to have one day a week free, and we encourage you to take your full holiday entitlement.



HOW TO APPLY

A full application pack, along with Terms & Conditions, is available from the Diocesan website, [here](#). For an informal conversation about vacancies in the Bournemouth Archdeaconry please contact:

The Rt. Rev'd. Debbie Sellin
Bishop of Southampton 01962 737343
Bishop.Debbie@winchester.anglican.org

Jane Hammond
Clergy Appointments Assistant 01962 737310
Clergy.appointments@winchester.anglican.org

‘From his fullness we have all received, grace upon grace.’
John 1: 16

Diocesan Office,
Wolvesey, Winchester
SO23 9ND
t: 01962 710963
www.winchester.anglican.org