



Portway and Danebury Team

Worshipping, Witnessing, Working

Priest in Charge

The Portway & Danebury Team

in the Deanery of Andover



PORTWAY AND DANEbury TEAM

INDEX

Page	Contents
3-4	Welcome
5	Introduction
6	Our Vision & Our Aims
7-8	Our Team
9-14	Meet the Parishes
15-16	Role Description
17	The House
18-19	Appendix
20	How to apply

WELCOME

Welcome to this Team profile and role description ... and welcome to the Diocese of Winchester!

At the heart of our life here is a desire to be always Living the Mission of Jesus. We are engaged in a strategic process to deliver a mission-shaped Diocese, in which parochial, pastoral and new forms of pioneering and radical ministry all flourish. Infused with God's missionary Spirit we want three character traits to be clearly visible in how we live:

Passionate personal spirituality

Pioneering faith communities

Prophetic global citizens

We pray that, if God is calling you to join us in his mission in this part of the world, he will make his will abundantly clear to you.

'As the Father sent me so I send you ... Receive the Spirit.' John 20:21

Read more about [Winchester Mission Action Planning](#) here.



The Rt Revd David Williams, Bishop of Basingstoke



ANDOVER DEANERY

There is a vibrancy and a sense of direction and purpose in the Deanery as we work together to deliver the Diocesan Mission Strategy. The Deanery is in the Northern Archdeaconry and is made up of 31 distinct but unified parishes, each unique yet sharing the many gifts and God-given talents in service to the communities where we live and work. At the heart of the Deanery is the market town of Andover, with fast expanding residential housing developments, allied to light industry and commercial outlets, yet surrounded by significant rural villages like the six of our Team. Fresh Expressions and new ways of being communities of faith are developing, as an evolving leadership grows in collegiate ministry confidence across the Deanery.

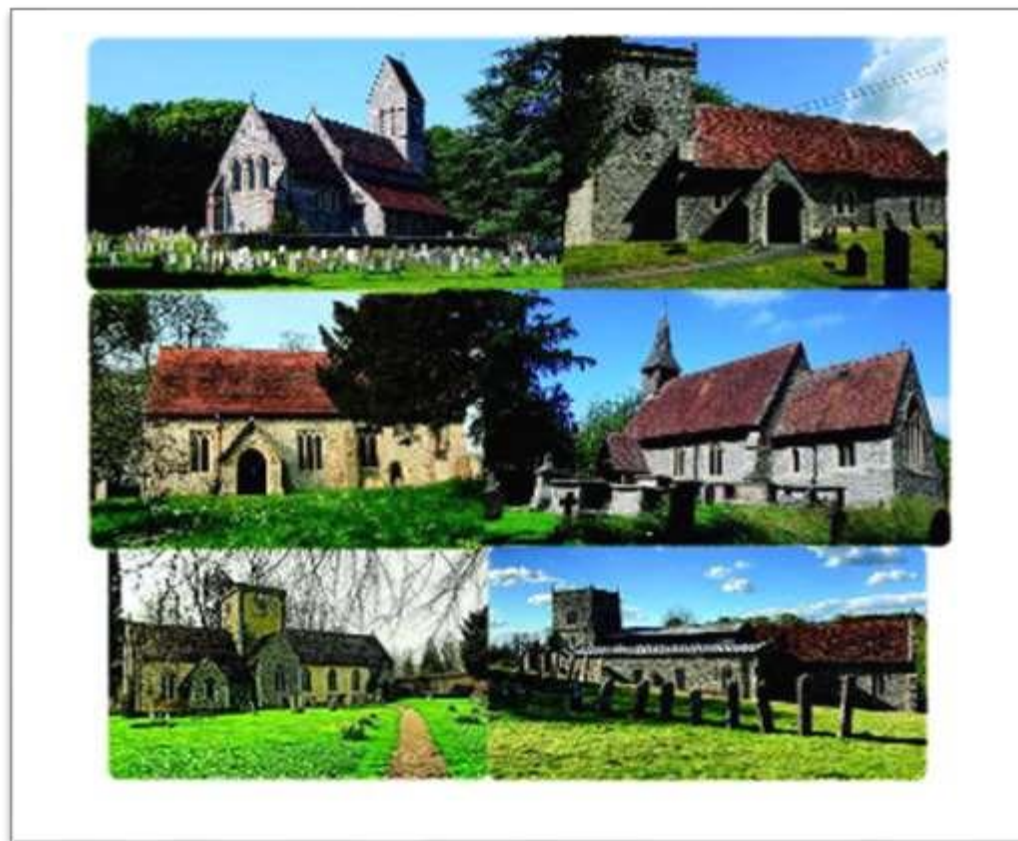
Nigel May
Lay Chair



INTRODUCTION

The Team Ministry covers a coherent area and the parishes vary widely in size, having between 150 and 1,200 inhabitants. All the parishes have between them been paying the full Common Mission Fund (Parish Share); current maintenance projects are covered and most parishes have adequate reserves – see Appendix B, p.19. There is one CofE school (Amport) and the church is welcome at the two Grateley Schools and at the Wallops Primary School where the Head is a church member and was previously Head of a church school. To support the clergy, there are Church members who are committed spiritually, financially and in practical ways. There is currently a part-time administrator.

The Portway and Danebury Team consists of six rural parishes to the south and west of Andover. There are bus services to Andover, Grateley and Salisbury and regular trains from Andover take about 75 minutes to London Waterloo. When the Team was formed in 2009, the parishes of Monxton, Amport, Grateley and Quarley which used to form one benefice and those of Over Wallop and Nether Wallop which formed another, were united; a seventh parish (West Andover) was included but it is very soon to be moved to the Andover Town Benefice, leaving the six village parishes together. We are confident that by the time our Priest-in-Charge is appointed St Michael's West Andover will no longer be part of our Team, which is why no details of that parish are given in this profile. There is a Team Council through which great strides have been made to unite us and to identify a common vision and witness to the Gospel. We are supported by an Associate Priest and a retired Priest, as well as by four Lay Ministers (see pages 7-8)





OUR VISION

We seek to know Christ better and to make him better known, by loving and serving our communities and by growing in faith, worship and prayer.

OUR AIMS

- Reach out to all our neighbours with the Gospel of God's love
- Learn the lessons of the recent lockdowns and discern how to do church differently, making the Christian life more relevant to our communities
- Develop ways in which we can strengthen our Pastoral Care
- Encourage more participation in fellowship groups, Lent groups, lectures and courses
- Nurture our children's faith and rebuild areas of outreach to schools
- Hold services as regularly as possible, with a wide range of worship and as appropriate to each location
- Revive community initiatives such as Messy Church and the marriage preparation weekend
- Grow in our personal development and spirituality, in our congregation size and in our giving
- Make the most of our diversity by sharing gifts and resources across the Team

There is a proposal to link our Team to the Anna Benefice of three parishes on our eastern boundary (Abbotts Ann, Upper Clatford and Goodworth Clatford). That benefice has recently appointed a Priest-in-Charge and when ours is well established, we plan to explore together what the benefits of a shared future might look like.

OUR TEAM

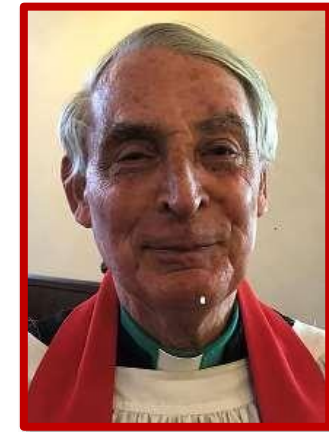
The Revd Matthew Grayshon (Associate Priest)

Matthew was ordained in 1981 and served in Beverley Minster, Runcorn (Cheshire), and St Mary's, Hanwell (Ealing) before moving to Ampport in 2016. He has always worked in teams of 3 to 6. He now lives in his own house in Quarley. He has led SOMA teams to the Democratic Republic of Congo and to Tanzania in order to support the clergy there and is diocesan adviser on Deliverance Ministry. He is married to Jane and has two grown-up children and two grandchildren.



The Revd Christopher Walker (Priest with permission to officiate)

Christopher spent his whole working life in the Ministry of Defence. Initially, as a Regimental Officer for 22 years; on retirement he retrained, was ordained in 1987 and re-joined the Army, first as a Regimental Chaplain and subsequently as an MOD Civil Service Chaplain. He retired in 2015. He is married to Ronwen, who has considerable experience in children's work. They have four adult children, twelve grandchildren and have lived in Quarley since 1984.



Geoff Wortley (LLM)

Geoff retired from the banking profession in 2001 and then returned to the ministry training which he had begun earlier. He was licensed as a Lay Reader in Norwich in 2005. He is experienced in church administration having inter alia been Lay Vice President of the Diocesan Synod, Chair of the House of Laity, Director of the Diocesan Board of Finance and Lay member of General Synod. He was also Director of the Norfolk Churches Trust. He moved to Hampshire in 2013. An Anglo-Catholic by tradition, he enjoys all forms of ministry and is licensed to conduct funerals.



Stephen Baldock (Lay Worship Leader, St Peter's church warden, Acting Chair of the Team Council)

Stephen was High Master of St Paul's School in South West London and has lived in Over Wallop since his retirement in 2004. He is Acting Chair of the Team Council in the vacancy. He helps to run a weekly home group, leads Sunday worship from time to time and plays the organ in the absence of a professional. He is married to Janet, a former GP and now Treasurer of the Over Wallop PCC and of the Team Council; they have four adult children and ten grandchildren.



Marilyn Childs (Lay Worship Leader)

Marilyn was a teacher and musician, both in school and church in Somerset. Having led worship in a Baptist Church for 40+ years, she moved to Over Wallop in 2017 and, while continuing to teach piano, she settled at St Peter's. She enjoys bringing the Bible to life especially through music and drama, and in leading worship and Bible studies. She is married to Max and together they help to raise their son's beef cattle. Their son, daughter-in-law and two grandchildren live in Chilbolton.



John Searles: (Lay Worship Leader with Bishop's Permission to Preach) John has lived in Over Wallop for many years and has served as church warden and PCC member at St Peter's Church. Having studied theology and pastoral studies at Wycliffe Hall, he was licensed as a Lay Worship Leader three years ago and also received a licence for the Bishop's Permission to Preach in October 2021. John is currently applying for further training as a Licensed Lay Minister.



MEET THE PARISHES

St Mary's, Amport

www.amportvillage.org.uk

The Parish of Amport, with a population of about 850, lies four miles west-south-west of Andover and includes the hamlet of East Cholderton. It borders the parishes of Monxton, Grateley and Quarley. Amport is a former farming community which, over the last few decades, has become the home of mainly retired businessmen and Armed Services officers, together with a recent large ingress of young commuters with growing families, who work in London or nearby towns. There are still a few descendants of the original inhabitants but they have been rapidly outnumbered by new residents.

Services

The effect of the lockdowns has been to curtail nearly all activities and the church is only now getting back to a more normal routine. There are plans to re-introduce the Family service and we held a successful Art Show and a Festival of Remembrance.

The School and Community

The CofE School has an excellent reputation and draws children from the village as well as from a wide area around; it recently came top in Hampshire primary school assessments. The Associate Priest who has been engaged with the school through weekly visits and as a Governor has built warm relationships with many families and there are hopes that this will soon lead to some form of family worship. The village has a number of community activities with a strong cricket club, coffee mornings, fund-raising concerts and quizzes and an annual church fête. Villagers value the church whether or not they are regular members of the congregation and the PCC views this as a significant opportunity. The newly-renovated pub is the hub for the younger generation. The attractive village green is used for sports by the school and others. The parish shares a village hall with neighbouring Monxton and a Parish Magazine with Grateley, Quarley and Monxton.

St Mary's Church



© Robert Hall

The flint church dates from 1320 and was restored, including a nave extension, in the mid-19th century. It is in a good state of repair, a total of nearly £200,000 having been spent in the last ten years on some major renovations, replacing the pews by chairs, adding a WC and a kitchenette and installing an efficient heating system, all making it more comfortable and welcoming, as well as more flexible. This has enabled us to use the Church as a community space for concerts, art exhibitions and flower festivals as well as school activities, in addition to its conventional use for worship. Music is an important part of worship at St Mary's. There is a regular organist and choir director, and an active choir, which sings at communion and evensong services, at weddings and regularly in the other churches in the Team.



St Mary's, Monxton

<https://monxton.org.uk/parish/church>

We are the second smallest of the six parishes. The village comprises 120 homes housing 250 people with a cross-section of young families and retired people. Monxton children are in the catchment area for Amport CofE school. Our village hall is available for hire and has been very well used for a variety of activities. There are plans for rebuilding this hall in the near future. There is no shop or Post Office nor is there now a village pub, so the hall and church are theoretically the only focal points of the village.

The Church – *Building and Congregation*

St. Mary's is a Victorian church built on the site of a much older one. We have a small but very dedicated congregation and we are keen to find a way of engaging with the newcomers to the village, many of whom are families.



Picnic after open air service on the green

The Church – *Other Things We Do*

We have in the past held a Messy Church regularly in the village hall but numbers were very small and the future of this after the Pandemic is uncertain. For several years, we held a mid-week café style service every other month in the village hall, called 'Coffee Cakes and Praise'. This has attracted people from churches in our team and also from elsewhere and we consider it to be a truly ecumenical event. We hope to restart this soon. For over 20 years, various members of our congregation have been involved in a local Neighbour Care service, helping people with transport and organising two lunches and a strawberry tea each year. Christian Aid is well supported in our parish and all collectors are volunteers from our congregation. There is a Food Bank collection point in our church and parishioners help regularly at the Andover Food Bank.

The Church - *Our Hopes for the Future*

Our hopes are that our church will become more relevant to today's world, but our challenge is to seek ways of achieving this whilst continuing to uphold the traditions of a rural parish church. Our particular challenges at present are that, for a variety of reasons, our PCC has been reduced to three people. Our only officers are Treasurer and Secretary, yet there is a group willing to maintain the church, help at services and in other ways.

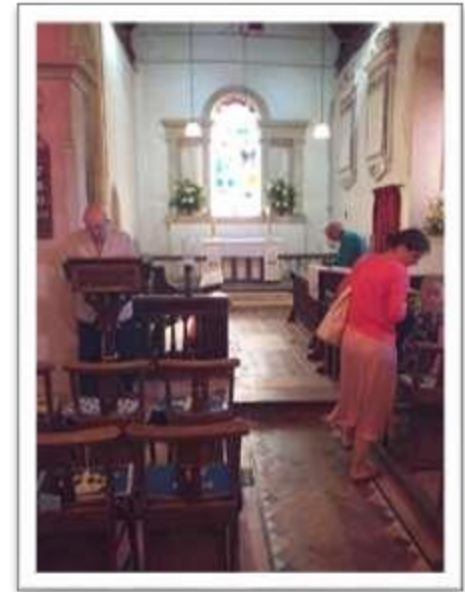
The Church

The site of the church, set amongst village pastures, is understood to have been used for Christian worship since the 9th century. The church and the village are recorded in the Domesday Book of 1086 but there have been several alterations since! The most unusual feature is a ground level bell frame. Two of the Bells were stolen in 2006 but replacements were cast and the three bells, blessed by Bishop David (pictured below), were rehung in a more secure bell frame.

Church Life and Ministry

Although it is a very small parish, it is by no means insignificant, with hard work ensuring that services are relevant and interesting. Festivals are enthusiastically celebrated with large congregations filling the church. The Mission initiative 'Great Lives' (a lay led celebration of the life of a saintly person) attracts people from a number of parishes and has been taken up as a form of service in several other villages. The Remembrance Sunday service is held at the war memorial in the village and is supported by many villagers and uniformed personnel from nearby military establishments.

Quarley is a small village within the school catchment area of Amport CofE School for which the PCC appoints a Quarley Foundation Governor. Although there is no shop or pub there is a large well equipped village hall with good parking – this enables us to extend our ministry to the Village by holding Harvest Suppers, Christmas parties for children and fund-raising events of all types which involve both church and village communities



St Leonard's, Grateley
www.grateleychurch.co.uk

The Church was built between 1095 and 1133 and incorporated elements of the previous Saxon Church; it was extended to its present size in the 13th Century. It remains unchanged and has a light, bright welcoming air and some special 13th Century stained glass from Salisbury Cathedral.

The congregation averages about 15 for the twice monthly services. We have a reputation for being a warm and welcoming Church. At Christmas and Easter, the Church is usually full. There are 70 seats in pews, plus 20 places in the Choir. There is a Bible Study Group which is attended by people from other villages, churches and denominations. We are fortunate in being part of a Team that encourages joint activities and services with our neighbouring parishes. Finances are sound and we have a strong support base in the community at large.

The Community

In the village there are a village hall, a pub, a primary school and an independent school (Grateley House) for children with special needs. A weekday bus service to Andover also serves Ampert, Monxton and Quarley. We are well represented on the Governing body of the primary school.

More information can be found on our website (see above) and also on the village website www.grateley.net



After the service



Grateley Church marquee service

St Andrew's, Nether Wallop

www.standrewsnetherwallop.co.uk

The Church

St. Andrew's dates back to the 11th century. The most notable features are the pyramid monument outside and the oldest wall paintings in the country inside.

The Congregation

The Church tries to extend its outreach to the whole parish with a monthly coffee morning, a weekly Fellowship group and an annual Summer Market raising funds for the church and the community. Harvest gifts support the Andover Crisis Centre and the many retired military contribute to the Remembrance Day service. St. Andrew's has a wide age range of regular attendees including families from the Army Air Corps base and the congregation is responsive to a diverse range of worship styles. A number of worshippers attend both the Wallop churches.

The Community

Nether Wallop is situated under the southwest side of Danebury Hillfort and is proud of its ancient church and pretty village with much photographed thatched cottages and the Wallop Brook alongside the Village Green. Many of the community are retired but there are also several young families with children who attend the nearby Catholic prep school. We also share with St Peter's Over Wallop a Parish Magazine as well as links with the AAC and the Museum of Army Flying. The village community is close-knit with many well organised events. The Village Green and the Village Hall are used by the Church for several events and there are also playing fields and a children's playground on the outskirts of the village. The farms around the village are mostly arable farming - with some sheep, beef cattle and a dairy herd. There are also livery stables, a vineyard and a cut-flower business.



Village Hall fund-raising concert



Wedding congregation at St Andrew's

The parish of St Peter's Over Wallop, which includes Palestine, Kentsboro and the Army Aviation Centre, has a population of just under 2,000. In 1957 the parishes of Nether and Over Wallop were united as a single benefice and the two parishes continue to plan their pattern of services together.

The Community

There is a full age range from young families to the retired. Thatched cottages abound and three large developments (including some low-cost housing) have recently been added. The village has a flourishing community shop, a small supermarket with a petrol station, an active pub, several farms and an equestrian stud.

The Church

The building was extended in the late 19th century and has the largest seating capacity in the Team (about 250). There is a good car park and a well-equipped church hall. We have an enthusiastic congregation with a strong faith. We endeavour to encompass all ages in our worship and the numbers on a Sunday are picking up again after the lockdowns. Always particularly well attended, in addition to Christmas and Easter services, are Remembrance Day and Christingle. "Little Angels" (a Wednesday morning faith-based baby and toddler group) is popular. To encourage discipleship, we have a home group to discover and discuss the Bible.

Several of those who attend regularly came through Alpha courses held over the years. The church runs the summer village fête on the Glebe Field (pictured), some school holiday activity schemes and a Harvest Supper.



ROLE DESCRIPTION

This Role Description should be read in conjunction with the vision and aims set out in this profile. The post is full-time Priest-in-Charge of the Team. They will reside in the Over Wallop Rectory. The role will be to provide leadership and inspiration, to have the energy and wisdom to hold the churches together in a creative and close working relationship and to explore the benefits of a shared future with our neighbouring benefice. We are looking for a Priest who...

Spirituality

- is keen to share a personal faith in Jesus Christ and an enthusiasm for Scripture
- will be creative and imaginative in spirituality, balancing ministerial work, recreation, family and friends

Worship and Preaching

- leads worship prayerfully, competently and in a stimulating and thoughtful manner
- has a commitment to developing styles of worship attractive to families, children and young people, whilst continuing to deliver services valued by the more mature members of the congregations

Leadership and Collaboration

- is comfortable working in a team and with volunteers and will prioritise collaboration with clergy, lay ministerial colleagues and the PCCs
- has the ability to identify and discern the gifts and skills in others and the knowledge and commitment to help them explore and develop these

Discipleship, Learning and Nurture

- will develop avenues for discipleship and mission, for people at all levels of commitment and engagement
- encourages younger people to take an active part in worship, mission and decision-making

Evangelism and Pastoral Care

- is willing to serve as a Governor of the schools served by the Team, particularly at Amport C of E (Aided) Primary School
- is committed to developing our relationships with all the schools in the Team area
- will develop our approach to pastoral care

Stewardship, Finances and Parish Administration

- is able to prioritise tasks effectively and to delegate and provide support as appropriate
- will be chair of the Team Council and help us to explore governance options
- is willing to allow the Lay Vice Chairs to chair PCC meetings as appropriate

Links with Other Bodies

- is willing to capitalise on opportunities for working with the local Armed Forces
- is willing to play a part in the life of the Deanery (both through chapter and synod) and the Diocese

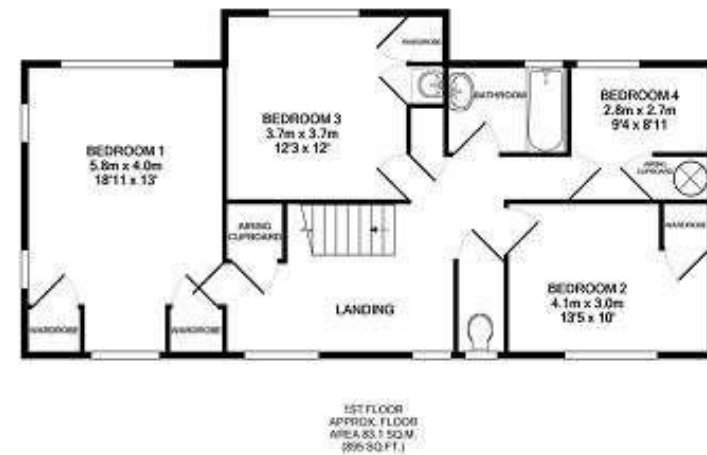
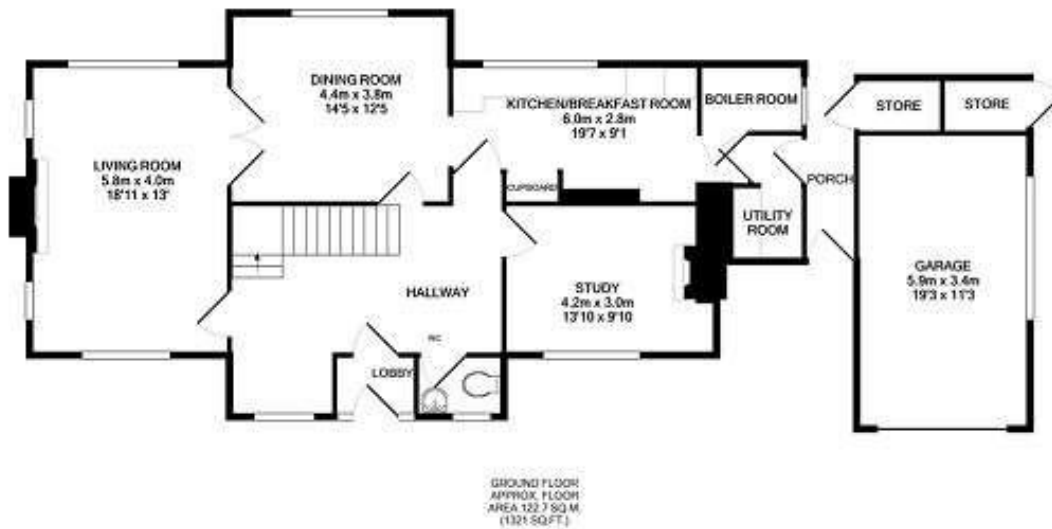
The role description should be read in conjunction with the [Guidelines for the Professional Conduct of the Clergy](#).

THE HOUSE



The Rectory, Over Wallop

The House, which adjoins the Church and overlooks the Glebe Field, has recently had a new fitted kitchen and utility room and the proposed works are full decoration and a replacement bathroom.



TOTAL APPROX. FLOOR AREA 205.8 SQ.M. (2216 SQ.FT.)

Whilst every attempt has been made to ensure the accuracy of the floor plan contained here, measurements of doors, windows, rooms and any other items are approximate and no responsibility is taken for any error, omission, or misstatement. This plan is for illustrative purposes only and should be used as such by any prospective purchaser. The services, systems and appliances shown have not been listed and no guarantee as to their operability or efficiency can be given. Made with Metropix 10/2021.

Pattern of services

Appendix A

We shall find it easier to talk face to face about our team than to express our enthusiasm and vision on paper; but we hope this attempt to describe ourselves will encourage you to come and meet us and see for yourself the opportunities that exist. Over recent years, we have worked together in furthering God's work, with initiatives such as daily services in Holy Week, Messy Church, a Café Church, a faith-based toddler group ("Little Angels"), a group for the younger working women, support of the Andover Food Bank and Crisis Centre.

Our service pattern post-Covid (currently two services per month per parish)

1st Sunday	9.30am 10.00am	Family Service/Morning Prayer Holy Communion	Over Wallop Grateley
2nd Sunday	9.30am 11.00am 11.00am 6.00pm	Family Communion Morning Prayer Holy Communion Evening Prayer	Nether Wallop Monxton Amport Quarley
3rd Sunday	9.30am 10.00am	Family Communion Morning Prayer	Over Wallop Grateley
4th Sunday	9.30am 9.30am 11.00am 6.00pm	Family Service/Morning Prayer Holy Communion Holy Communion Evensong	Nether Wallop Quarley Monxton Amport
5th Sunday	(morning)	Team Communion	(rotation)

Occasional offices in our team (2021)

Funerals (church or crematorium)	Memorial service	Interment of ashes	Baptisms	Weddings (inc blessings)
22	4	13	20	18

	Normal income	Routine expenditure	Unrestricted reserves	Restricted reserves
Amport	24,000	24,000	25,000	3,000
Grateley	10,500	10,500	18,000	13,000
Monxton	17,000	17,000	28,000	2,000
Quarley	10,000	9,500	18,000	0
Nether Wallop	37,000	33,000	27,000	32,000
Over Wallop	45,000	45,000	136,000	44,000

HOW TO APPLY



A full application pack, along with Terms & Conditions, is available from the Diocesan website, [here](#).

For an informal conversation about vacancies in the Winchester Archdeaconry please contact:

The Right Reverend David Williams, Bishop of Basingstoke 01962 737330 bishop.david@winchester.anglican.org

Jane Hammond

Clergy Appointments Assistant 01962 737310 clergy.appointments@winchester.anglican.org

'From his fullness we have all received, grace upon grace.'
John 1:16

Diocesan Office, Wolvesey, Winchester SO23 9ND

t: 01962 737310 www.winchester.anglican.org



@CofEWinchester



www.facebook.com/CofEWinchester