

Rector

The Arle Valley Benefice

New Alresford, Old Alresford, Bighton & Ovington

In the Deanery of Alresford



DIOCESE of
WINCHESTER

INDEX

Page	Title
3-4	Welcome
5	Introduction
6	Our Vision
7-11	St. John's, New Alresford
12-13	St. Mary's, Old Alresford
14-16	All Saints, Bighton
17-19	St. Peter's, Ovington
20	Our Team
21-22	Our Organisation
23	The House
24-25	Role Description
27	Appendix



Our Ecumenical Weekend Away

WELCOME

Welcome to this parish profile and role description ... and welcome to the Diocese of Winchester!

At the heart of our life here is a desire to be always Living the Mission of Jesus. We are engaged in a strategic process to deliver a mission-shaped Diocese, in which parochial, pastoral and new forms of pioneering and radical ministry all flourish. Infused with God's missionary Spirit we want three character traits to be clearly visible in how we live:

- ✦ Passionate personal spirituality
- ✦ Pioneering faith communities
- ✦ Prophetic global citizens



Tim Dakin
Bishop of Winchester



David Williams
Bishop of Basingstoke

The Diocese of Winchester is an exciting place to be at the moment. We wait with eager anticipation to see how this process will unfold. We pray that, if God is calling you to join us in His mission in this part of the world, He will make his will abundantly clear to you.

'As the Father sent me so I send you ... Receive the Spirit.'

John 20:21

Read more about [Winchester Mission Action Planning](#) here.

ALRESFORD DEANERY

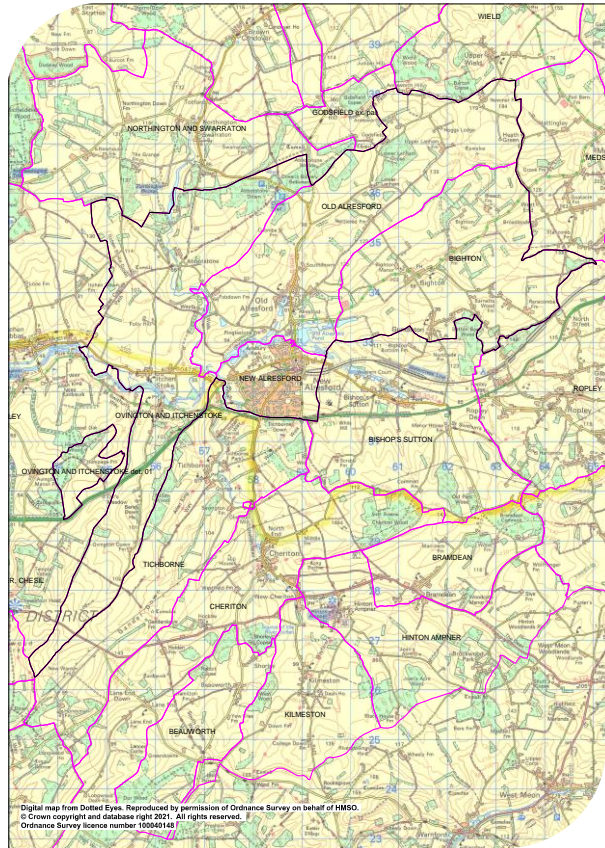
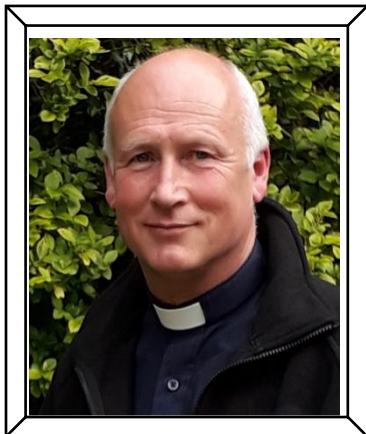
Close to the historic Cathedral city of Winchester we are a very rural deanery of five benefices and twenty-six churches with a rich diversity of tradition set in a large area of beautiful Hampshire countryside bordering Basingstoke to its East and Winchester to the West.

We have a mix of stipendiary clergy, SSMs, LLMs and those who hold the Bishop's Commission for Mission.

Alresford Deanery Chapter is a place of warmth, support and friendship. We are currently beginning the process of working together with the neighbouring deanery of Alton, exploring joint chapter and synod meetings.

The Deanery has worked hard to produce a practical and positive Deanery Mission Action Plan (dMap) and Pastoral Plan which includes the development of Focal Ministry in the Deanery, with a pilot period as a first step. The Arle Valley currently has two Focal Ministers in the Pilot scheme.

The Reverend David Chattell
Area Dean



INTRODUCTION

We are seeking a Rector for the Arle Valley Benefice which consists of four parishes, New Alresford, Old Alresford, Bighton and Ovington with Itchen Stoke.

New Alresford is a picturesque market town midway between Winchester and Alton. There is an exceptional number of clubs, societies, coffee shops and pubs which contribute to a very lively community atmosphere, and St. John's church is situated at its heart. There is a thriving weekly market, and a small amount of light industry provides some local employment. The annual Watercress Festival attracts in excess of 15,000 visitors, many of whom return to enjoy the beautiful surrounding countryside and river walks.



With the population currently at about 6,000, housing is varied and includes some social provision as well as sheltered housing and a new retirement complex. In addition there is a proposed development of some 300 new houses. We have three schools – infant, junior and secondary – with further education colleges in both Alton and Winchester.

St. Mary's is situated in the rural village of **Old Alresford** and lies in the countryside one mile north of New Alresford. Together with its eight surrounding hamlets it has a population of c. 600 including some 60 children. The village employment opportunities are with watercress and salad producers or the local rest home. Most residents, mainly professionals, travel further afield for their work.

All Saints church at **Bighton** is situated some three miles north-east of New Alresford. The parish comprises the village of Bighton and its outlying areas together with the adjoining settlement of Gundleton. There are about 140 households. Many residents commute some distance to work, some daily to London.

The two small villages, **Ovington and Itchen Stoke**, are situated just under two miles west from the centre of New Alresford and lie either side of the River Itchen, well known to anglers. The main church of the parish is St Peter's at Ovington. The population of the two villages together with outlying farmhouses and hamlets is around 300. Itchen Stoke has St Mary's church dating from 1866 built in the style of La Sainte Chapelle in Paris. The church building is now cared for by the Churches Conservation Trust and kept open for visitors.



OUR VISION

We seek to be a welcoming, thriving and growing Christian family, working to discern God's vision for us whilst witnessing to, and living out, Christ's message in our community with a relevance that resonates in the 21st Century.

The person we seek

- will be called by God to this place, being excited to encourage each of us in the development of our relationship with Him.
- Will challenge and encourage us, harnessing and underpinning our energy, enthusiasm and creativity to grow our living faith.
- will help our four parishes to work in unity, showing sensitive leadership skills and demonstrating change management experience.
- will have good time management skills, be approachable whilst commanding respect, and have a good sense of humour.
- will demonstrate a passion for God's creation and an understanding of how we can better look after the world around us.



OUR CHURCH LIFE

NEW ALRESFORD

St John the Baptist

St John's is situated in the heart of Alresford. Every day, many people walk past the church on their way to the town or the heritage line railway station. The large, open churchyard is maintained by volunteers, together with some paid help, and is a good resource for the town. The church can seat around three hundred people and there is an adjoining hall with a Benefice office, used by the administrator, plus a kitchen and two other smaller rooms. The three Licensed Lay Ministers give support when not working in the village churches and we have a worship leader who takes informal family services. There is a team of experienced pastoral visitors, which includes specialist bereavement and hospital teams. Since the pandemic began, they have regularly contacted over 150 vulnerable people. Though in the past we have had good numbers of baptisms, weddings, and funerals, these have reduced in number. We have a mission link in Newcastle and also in Zimbabwe, India, and The Holy Land, all overseen by our World team. Numerous prayer, study and support groups meet throughout the year, more recently this has been via zoom. Our 'eco' co-ordinator is very enthusiastic and is really helping us to become an 'eco-church'. We are now nearing Bronze award status. We recognise though that there is still much more that we should be doing.



Worship

We are a Eucharistic church but also enjoy a wide range of informal worship including 'Tea-Time church'. Throughout the lockdown, we have offered live-streamed and recorded services and meditations. We are now offering restricted attendance services. The church has been open daily for private prayer throughout recent lockdowns. Having lost our exceptional choir in 2019, along with some of our congregation, our hope is to revitalise music which has always been an important and integral part of worship in St. John's. From being a church which managed diverse worship well, we now have some damaged relationships and recognise that this is an area in need of healing.

During the past few years, we have been through a tough time, not only the result of the pandemic. However, during the past few months, we have started looking at different and exciting ways of being church. Over Christmas, we had an outside crib complete with life size figures, built in part by the local Men's Shed, a streamed community carol



service and a Nativity Hunt. We also gave out numerous donated gifts to local shops, businesses and vulnerable individuals through 'Joy from St John's'. Throughout Lent, we have had a popular 'Haven of Hope' also located outside the church.

Children and Young People

We have good links with the infant and junior schools where our Rector is normally invited to take monthly assemblies. We have less contact with the secondary school. We normally have a weekly informal youth group and there are activities such as the 'Summer Fun club' and the Crib service which are extremely popular with local children. During the pandemic, we have kept in touch with families and children via zoom and we are keen to find new ways of attracting these younger age groups to become more involved in church life.



The Town

Alresford is a vibrant town with many clubs and activities. We have strong links with the community through special services, for instance on Remembrance Sunday and Carol Services. We also participate in local events. We run a successful cafe at the 'Watercress Festival', with lots of seating in the churchyard and we hold our own 'Apple Day' around Harvest time. Both events raise money for our much-needed funds. The 'Friends of St. John's' group support our fund raising with film shows and other activities. We are part of the Alresford Deanery and we are Covenanted with the Catholic and Methodist churches, with whom we enjoy an annual away weekend.

Our Challenges

To continue to heal our divisions and help us achieve unity without uniformity.

To revitalise music in St John's by exploring all styles of choral and sacred music, both traditional and contemporary, with a new music director.

To build relationships with schools, colleges and young people at work, and help them to see the relevance of God in their lives.



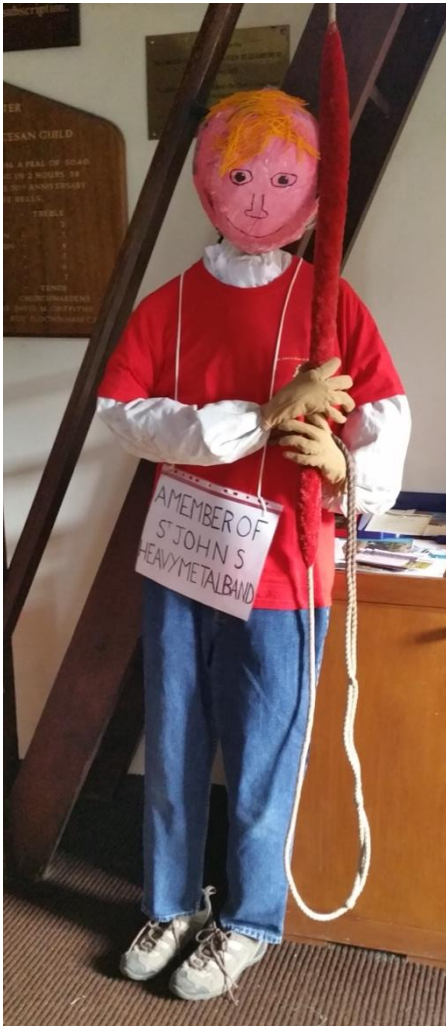
LIFE DURING LOCKDOWN



GROUPS AND SOCIAL EVENTS



GROUPS AND SOCIAL EVENTS



OLD ALRESFORD

St Mary the Virgin

Our Village



The view from the west door of our church

The rural village of Old Alresford lies in the countryside one mile north of New Alresford. Together with its eight surrounding hamlets, it has a population of c.600 including some 60 children.

The village employment opportunities are with watercress and salad producers or the local care home. Most residents, mainly professionals, travel further afield for their work.

The local school and shop closed some 35 years ago. Public transport links are minimal, although the introduction of a regular bus to New Alresford on Monday and Thursday mornings is providing the opportunity for some villagers to shop and meet in the town for coffee and a chat. There are no plans at present for further housing development.

Our Church

The church of St. Mary the Virgin was mentioned in the Domesday Book, with the present brick and flint building constructed in the 18th century. It is considered to be of special architectural and historic interest, and Listed Grade 2*. The church opens to an amazing view over the surrounding countryside, and the walk crossing the churchyard and seats here are used by many villagers for prayer and contemplation every day.



The church is located to the south of the parish opposite Old Alresford Place – once the Diocesan Office and in the 19th century the church rectory. In 2017, the interior of the church was re-decorated and the lighting upgraded. We are privileged to be the founding church of the Mothers' Union and in 2015 the south transept, together with a new window, were dedicated to Mary Sumner.

As music is an important part of our worship, we replaced the 19th century Bevington organ with a digital organ. One of the highlights of the year is the Carols by Candlelight service which is very well attended by villagers, families and friends.



We have a small friendly and welcoming congregation and a committed PCC of nine members, including the Focal Minister and the Churchwarden. Each quarter we support a different charity and encourage donations with an information display at the back of the church.

Our Parish

The main aim in our Parish Mission Action Plan (pMAP) is to find ways of encouraging families from our village to visit our church, attend some of our services and participate in church related activities. This means developing and broadening our appeal to the wider community, improving the access to the building and paying more attention to newcomers as they arrive in the parish and then spending more time nurturing them.

The most important piece of fabric development is to have our own toilet and kitchen facilities previously provided by Old Alresford Place. We struggle at weddings and funerals without these. We are unable to run special events and, now that the church is becoming the centre for Mothers' Union pilgrimages, it is so important to have good facilities to welcome visitors.

Because the church is situated very much at one end of the parish, much of the village activity happens in the Village Hall and on the Village Green opposite the hall.



The centrally located village hall, the Christy Hall, is the focus for numerous local activities including:

- TOADS, the very successful dramatic society
- Pop up Post Office
- Annual Village Fair
- Keep fit classes
- Fireworks Evening



These are some of the organisations and events that contribute to the life of this friendly and vibrant community.

Left: The Annual Village Fair on the Green opposite the Christy Hall

BIGHTON

All Saints

Our Parish

Situated some three miles north-east of Alresford, the parish comprises the village of Bighton and its outlying areas together with the adjoining settlement of Gundleton. There are about 140 households with 273 on the Electoral Roll. Many residents commute some distance to work, some daily to London.



The Church is of Norman construction and is well-maintained thanks to generous local residents who hold it in high esteem.

The Church's life and ministry

Here at All Saints we have been fortunate in being part of a pilot scheme within the Deanery for Focal Ministry. Our Focal Minister has proved to be a great success and we are looking forward to him being formally Licensed into the role in the near future.

Our hope is that the new priest will work with him to realise our pMAP ambitions, and to provide in our Church Holy Communion at least once per month and carry out the important Marriage and Baptism ceremonies within our Parish Church as and when required.

The Church Electoral Roll stands at 33. There is a strong and active PCC and we have a Parish Mission Action Plan (pMAP) in place; this was updated in 2019 and focuses on the following objectives:

- To include and involve current church members in events and to reach out to the whole community and all ages;
- To increase participation in and support for regular worship and community events;
- To encourage generosity in supporting charitable causes and in serving the community, especially those less fortunate.

These aims are helping us to develop initiatives with families, foster community links, and give support to local charities as well as the worldwide Church.

Although a lot has been different in the last year owing to Covid-19, in normal times the congregation at our weekly Sunday morning service averages around 15, with 50+ on special occasions and at festivals:

- The Mothering Sunday service involves the children in various ways including the distribution of posies and cakes;
- On Easter Day, the children have fun with an Easter egg hunt in the churchyard after the service;
- Harvest Thanksgiving is followed by a Harvest Lunch in the Village Hall;
- Remembrance Sunday is always well-attended;
- The Carol Service involves readers representing all areas of the community: Parish Council, Village Hall, Fete Committee, BiG4U!, Book Club – and a social event is held afterwards with mulled wine and mince pies;
- The Christmas Midnight Communion is also very well-attended.

In terms of overseas activities, in the last few years, the parish has supported the Deanery link with a church and school at Lango in Uganda. In 2015-6, following our Benefice Curate's visit to Myanmar, we took the lead in fundraising to rebuild a Church in a remote jungle region, holding a Midsummer Feast and a Family Beetle Drive; as a result, the Benefice raised the £15,000 needed to build St Andrew's Church in Sitwe which was consecrated at Easter 2016. As a Deanery, we are now reviewing our next overseas link.

In terms of local activities, after a number of families with young children moved into the parish, we started a Church initiative called 'BiG4U!'. In non-Covid affected times, this involves various Saturday afternoon events in the Village Hall, often around Mothering Sunday, Harvest and Advent. The afternoons consist of craft activities, a short teaching/worship time, and tea. In addition, the PCC donates and delivers (chocolate-filled!) Advent Calendars to every family in the parish each year.

Over the last Covid-affected year, the strength of our parish has been demonstrated in various ways:

- The continuation of Church services – when possible in All Saints, but otherwise frequently on Zoom, supported ably by our Focal Minister and members of the PCC;
- The setting-up of a Village Support Group jointly between the Parish Council and the Church to provide help, support, transport and shopping for those isolating, lonely or struggling;
- The continuation of parish events where possible: for example, the distribution of Advent Calendars, the collection of Harvest gifts, and the delivery of messages and seeds for Mothering Sunday instead of the usual posies.

Parish organisations

Members of the Church Community are actively involved, and often take a leading role, in all other aspects of village life. Alongside the Church, other community facilities are the Village Hall, the well-regarded (and recently revamped) pub, The Three Horseshoes, and the local magazine.

The Village Hall holds visiting theatre performances once or twice a year, hosts monthly cinema viewings, runs a Book Club, and is the venue for events such as celebration lunches or parties – over 120 people attended the most recent royal celebration. The well-attended annual Inter-Village Quiz with Old Alresford is hosted in Bighton every second year.



The biggest event in our community calendar in a normal year is the Annual Fete, held in early September, which involves a large proportion of local residents. There is a wide variety of activities and events, involving a huge amount of preparation alongside on-the-day participation, consumption and purchasing, and the money raised is divided equally between the Church and the Village Hall.

There is also a large attendance of 100+ at the round-the-village Carol Singing which, in normal years, begins at the Village Hall, visits three homes and then the Church; carols are sung, everyone is encouraged to embrace the true meaning and spirit of Christmas, and all the children are given an olive wood tree decoration from Bethlehem; the evening concludes with refreshments and a visit from Father Christmas. In 2020, owing to Covid restrictions, this was replaced with 'Carols by Carlight' in the Village Hall carpark, with our church organist playing, a sound system, our Focal Minister doing a brief and appropriate address, a visit from Father Christmas on his sleigh – and a huge turnout of community members singing loudly in their cars! Donations were collected as usual for specific local charities.



The 'BigGun News' is our local monthly community magazine, which is distributed both in hard copy and electronically. It gives details of local events and activities, organised by the Church, the Village Hall and others. The magazine is highly valued locally and enjoys contributions from all across our community, young and old, Church members and others, as well as from our local Surgery, Councillor and MP. Local businesses are also given the chance to advertise. And there is often an article or section of interest contributed by a community member.

THE PARISH OF OVINGTON AND ITCHEN STOKE

St Peter's

These two small villages situated just under two miles west from the centre of New Alresford lie either side of the River Itchen, well known to anglers and surrounded by farm land and water meadows with pleasant walks, all within the South Downs National Park. The parish also includes outlying farmhouses known as Gander Down, Orr's Meadow and Hampage Farm to the south and west plus Folly Farm and Abbotstone to the north.

Ovington has St Peter's church, a 150 year old Victorian construction with flint walls and a distinctive oak bell tower with a spire. It is situated alongside the site of the original 13th century church of which the west arch remains. The spire was repaired and restored with oak shingles in 2020.

St Peter's has pews with a capacity of a 100. A quiet Sunday will have a congregation of around 8 to 12. Christmas and Easter services have congregations of 45 to 55 including children. Weddings have been up to 120 and funerals with standing room only at 140.



St Peter's from the west.
13th century arch on north side

We have a digital organ allowing the organist to be quite expansive. There is a set of four bells dating from 1860s, usually rung by the St John's bell ringers upon request and by visiting bell ringers. Volunteers provide flowers, church cleaning and some churchyard maintenance. The church is normally kept open daily from morning to dusk (but only on Sundays during Covid Lockdown).

Itchen Stoke has St Mary's church dating from 1866 built in the style of La Sainte Chapelle in Paris. However, the church building of St Mary's is now cared for by the Churches Conservation Trust and kept open for visitors. The surrounding churchyard remains the responsibility of the current PCC. Two services a year are held by the Arle Valley Benefice by candle light only since this church has no electricity or water or toilet installation. The churchyard is open for burials for residents of Itchen Stoke only.

Services

Not least because of the support of a retired priest and the Lay Ministers of the Benefice, St Peter's has managed in the past two to three years or so to maintain an average of three services a month - one communion service, one or two Morning Praise or sung Mattins as shown in the Appendix "Worship & Services", and Café Church.

Café Church

Ovington Church first started hosting 'Café Church' five years ago and these services have now become part of the intrinsic nature of what we offer at St Peter's.

We began with the intention of having them perhaps three times a year but we quite quickly went to holding them far more frequently; usually before lockdown it was every/every other month. It brings to the community a wonderful opportunity to enter the church to enjoy a coffee and a chat, before we then join together, very informally, to consider and discuss a theme or a word or an idea.



We have all found that this style of worship has brought about a considerable feeling of mutual respect as we learn from each other's experiences, and about each other's Faith. We are often challenged to reflect and contemplate on this, resulting in a spiritual growth.

There seems to be an energy of true fellowship because we share and engage with each other in a way that isn't possible with liturgy. This allows us to become vulnerable with each other and that therefore cultivates an intimacy, providing a deeper sense of community.

We also pray together, and sing when allowed to!

Our Parish

The population of the two villages has a relatively low turnover. It is a pleasant, quiet place to live. The nature of the residents extends from eminent but discreet professionals, retirees, active farmers, small businesses and traditional trades.

At present there are about 18 families with children across the two villages ranging from infants to students attending both private and state education.

As a social centre, apart from the Bush pub, St Peter's is the only place or reason for community involvement. Church events play an important role in bringing the community together and as an opportunity to fundraise for the parish. Events held in the past include the village fete, carol singing on Christmas Eve round the village ending up in the pub, concerts, safari suppers, bridge drives, lectures etc. As the number of families in the parish is increasing, going forward we would like to hold more family focussed events such as Easter egg hunts after the Easter day service, pet services and Christingle services.

The PCC can be described as pragmatic and not prescriptive about church affairs and is motivated to keep an active church for future generations and the character of the two villages as set out in our pMAP. The PCC finances just about break even for the Parish Share. A fabric fund is maintained which has financed £45,000's worth of major restoration to the bell tower and spire. The recent QI report identifies further repairs required. In addition, architectural plans have been drawn up to bring mains water and drains to the church for modest catering and a conversion of 25% of the pew space to an open plan meeting area for other users of the church. Such new development requires fundraising.

OUR TEAM

ST. JOHN'S, NEW ALRESFORD



Churchwardens: Jackie Connell and Jane Parsons
Worship Leader: Rosie Waring Green

ST. MARY'S, OLD ALRESFORD



Churchwarden: Roger Parsons
Focal Minister: Sue Armstrong

ST. PETER'S, OVINGTON



Churchwarden: Pip Stevenson
Lay Minister: Peter Colquhoun
Lay Leader: Minna Bruce

ALL SAINTS, BIGHTON



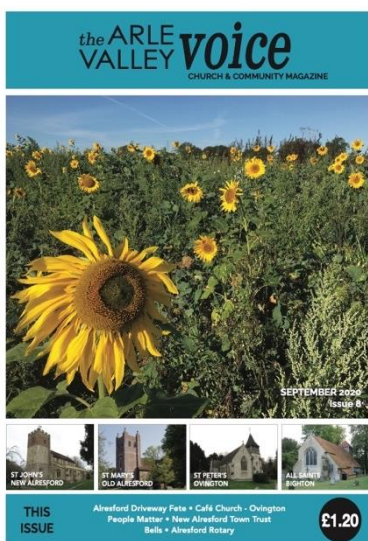
Churchwardens: Bob Ellis and
Simon McCowen
Focal Minister: Ian Waring Green
(centre)

OUR ORGANISATION

Governance

	Electoral Roll	Worshipping Community
St. John's, New Alresford	221	174
St Mary's, Old Alresford	35	18
All Saints, Bighton	33	19
St Peter's, Ovington	33	12

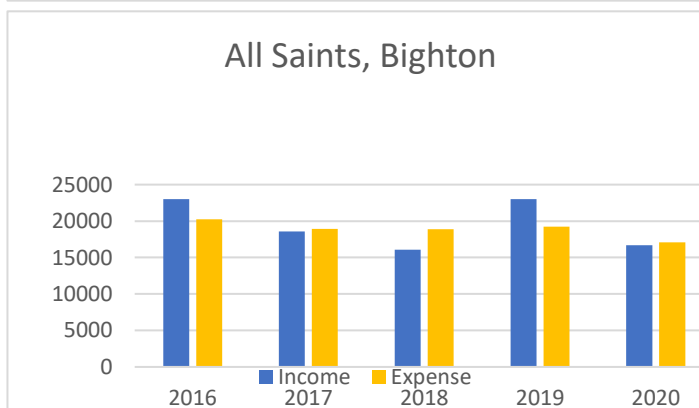
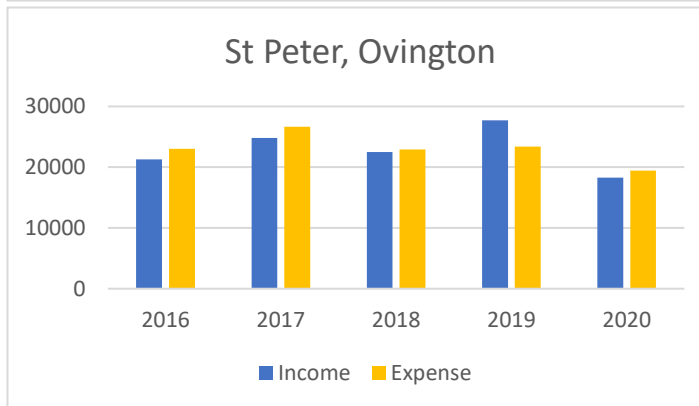
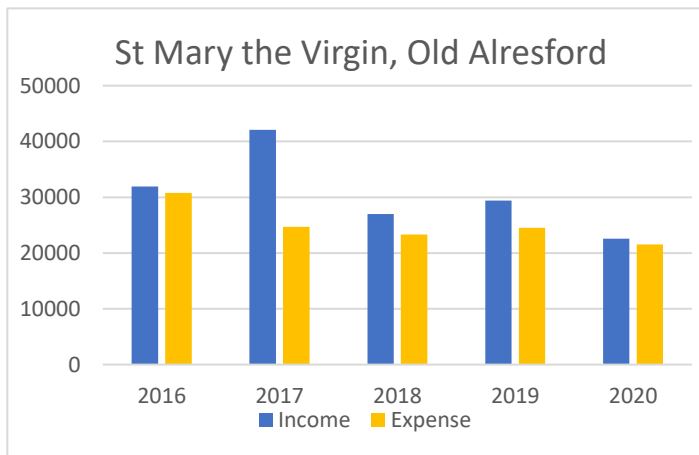
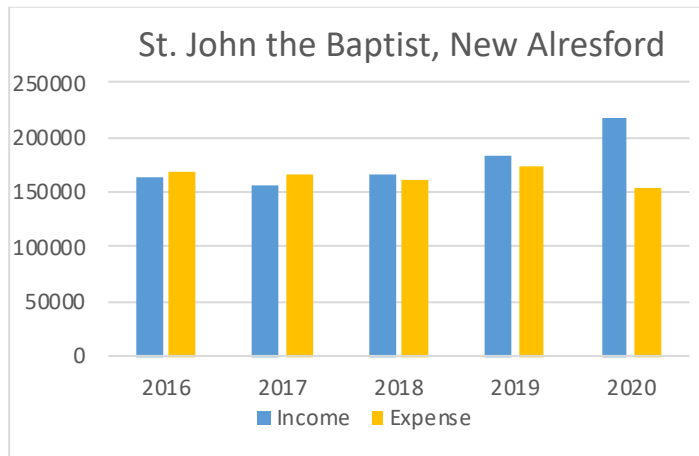
Each parish in the Benefice has its own PCC and they all meet separately. St. John's is the largest PCC and it has some dedicated and supportive sub-committees. The village PCCs, each of which tends not to have subcommittees, are responsible for their own Worship, Fabric and Outreach programmes.



The recent Bishop's Review of our Benefice recommended we have just one PCC and that we should improve the clarity of roles and structures. Our new incumbent will need to lead us in this work so that we understand the pros and cons of a single PCC. With the incumbent's help we can define and agree the future way of working.

All the PCCs have access to the Benefice administrator who works 20 hours a week. We have a voluntary team who produce the monthly Benefice magazine - The Arle Valley Voice.

UNRESTRICTED INCOME AND EXPENDITURE



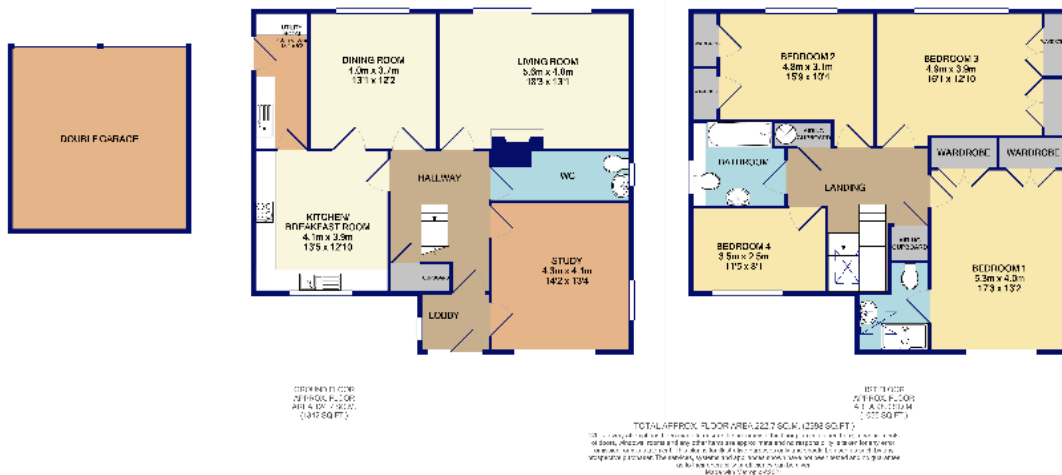
THE HOUSE

The Rectory is approximately a quarter of a mile from the town centre of new Alresford. Built in the 1990s it is a large, attractive detached house with four bedrooms and a large study with dual access from the porch and the hall.

The lounge is spacious and light, overlooking the secluded garden. There is a separate dining room. The modern, recently refurbished kitchen/breakfast room is well fitted with a gas hob and double oven and plumbing for a dishwasher. There is a separate utility room with access into the garden. There is a cloakroom leading off the hall.

Upstairs there are three double bedrooms, all with spacious fitted wardrobes, and one smaller bedroom. The ensuite and family bathrooms were revamped a few years ago. It is a comfortable house with gas central heating and double glazing. There are fitted carpets throughout.

Outside at the front there is a garage and parking space for several cars. The back garden is a good size, mainly laid to lawn with various shrubs.



ROLE DESCRIPTION

This Role Description should be read in conjunction with the vision, aims and priorities set out in this profile. The role is for a Rector who will lead, support and nurture the inhabitants of these diverse parishes and build on recent achievements to develop the mission of the Church in the community and ensure pastoral needs are met. It is for an experienced leader who will carry significant oversight and strategic development responsibilities. As our Rector we are seeking someone who will:

Spirituality

- Be faithful in a life of prayer and walk with God.
- Be a creative and sensitive spiritual leader, able to point others to Christ.

Worship and Preaching

- Develop a broad, diverse range of worship suitable for all ages.
- Support and encourage the ministry of lay people both in leading and participating in services.
- In preaching, present and interpret the Christian message in inspiring, relevant and challenging ways.

Leadership and Collaboration

- Be a servant leader, discerning, developing and making the most of people's gifts and skills, recognising and encouraging all contributions to the life of our churches.
- Have the ability to lead collaboratively, work with the Focal Ministers and various teams in the parishes, communicating effectively and enabling others to take on new roles.
- Identify the vocation and unique contribution of each church to enable collaboration within the Benefice.

Discipleship, Learning and Nurture

- Build prayer more fully into the fabric of the life of our local churches and continue to develop people's confidence in praying in all spheres of life.
- Encourage the nurture and growth of church members of all ages through home support and training groups.
- Encourage and help young people and their families to see that God is alive and relevant in today's world.
- Ensure that everyone is valued and continues to grow in their faith and has a role to play in the life of the Church.

Evangelism

- Engage with schools and young adults and be committed to further develop mutual relationships.
- Connect fully with the formal and informal life of the community, strengthening church bonds by being a sincere, open and accessible presence ‘about town’ and by using the Benefice website and other communication platforms.
- Understand the diversity and breadth of our local community by working and encouraging us in mission and outreach.

Pastoral Care

- Be sensitive to and understand the varied pastoral needs in our communities including making home visits.
- Expand and grow pastoral care recognising the importance of building relationships and encourage the gifts and skills of others.
- Help us to develop our welcome ministry.

Stewardship and Parish Organisation

- Exhibit and proactively encourage generosity in the discipleship of church members, in the giving of their time, talents and money.
- Revisit with PCCs their roles and manners of working, with the possible aim in the long term of establishing a Benefice wide PCC that operates under a fit for purpose organisational structure.
- Be willing to delegate and have an understanding of financial and organisational management.

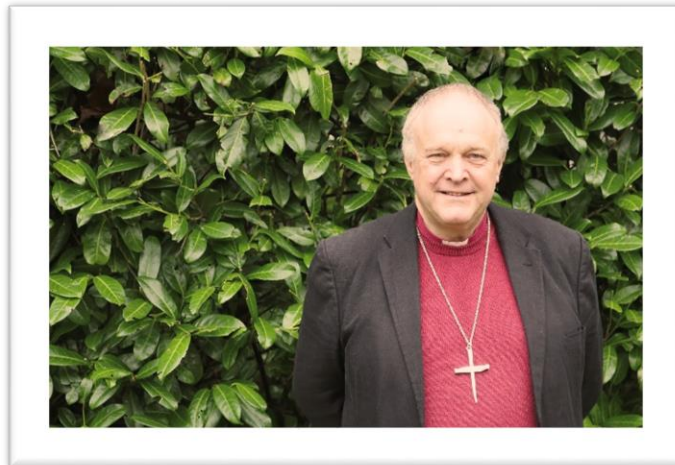
Ecumenism and links with other bodies

- Be committed to supporting the mission and charity links of the Benefice churches.
- Be actively involved in the Deanery, both through chapter and synod.
- Be committed and actively involved with Churches Together in Alresford.

The role description should always be read in conjunction with the [Guidelines for the Professional Conduct of the Clergy](#).



HOW TO APPLY



A full application pack, along with Terms & Conditions, is available from the Diocesan website, [here](#).

For an informal conversation about vacancies in the Winchester Archdeaconry please contact:

The Right Reverend David Williams

Bishop of Basingstoke 01962 737330 bishop.david@winchester.anglican.org

Mrs Emma White

Clergy Appointments Assistant clergy.appointments@winchester.anglican.org

Appendix

Pattern of services

Week	St John's New Alresford	St. Mary's Old Alresford	St Peter's Ovington	All Saints Bighton
1	8:00 BCP Communion 9:30 CW Communion	11:00 Morning Praise	11:00 Café Church	
2	8:00 BCP Communion 9:30 All age worship 18:00 Evensong	9:30 BCP Communion	11:00 CW Communion	11:00 Morning Prayer (BCP)
3	8:00 BCP Communion 9:30 CW Communion 18:00 Sunday at Six	9:30 CW Communion	10:00 Morning Praise/Mattins	11:00 CW Communion
4	8:00 BCP Communion 9:30 CW Communion 17:00 Tea Time Church	11:00 Morning Praise		11:00 Morning Prayer (CW)
Wednesdays	9:00 Celtic Morning Prayer			
Fridays	10:00 Communion Service			

'From his fullness we have all received, grace upon grace.'
John 1:16

Diocesan Office, Wolvesey, Winchester S023 9ND

T: 01962 897082 w: www.winchester.anglican.org



@CofEWinchester



www.facebook.com/CofEWinchester