



Vicar

The Parish of Yateley

In the deanery of Odiham



INDEX

| Page | Title |
|-------|------------------|
| 3-4 | Welcome |
| 5 | Introduction |
| 6 | Our Vision |
| 7-9 | Our Church Life |
| 10-11 | Our Team |
| 12 | Our Organisation |
| 13 | The House |
| 14-16 | Role Description |
| 17 | Appendices |



WELCOME

Welcome to this parish profile and role description ... and welcome to the Diocese of Winchester!

At the heart of our life here is a desire to be always Living the Mission of Jesus. We are engaged in a strategic process to deliver a mission-shaped Diocese, in which parochial, pastoral and new forms of pioneering and radical ministry all flourish. Infused with God's missionary Spirit we want three character traits to be clearly visible in how we live:

- ✦ Passionate personal spirituality
- ✦ Pioneering faith communities
- ✦ Prophetic global citizens

The Diocese of Winchester is an exciting place to be at the moment. We wait with eager anticipation to see how this process will unfold. We pray that, if God is calling you to join us in his mission in this part of the world, he will make his will abundantly clear to you.

'As the Father sent me so I send you ... Receive the Spirit.' John 20:21

Read more about [Winchester Mission Action Planning](#) here.



Tim Dakin
Bishop of Winchester



David Williams
Bishop of Basingstoke

ODIHAM DEANERY

We are a dynamic Deanery with a mission orientation, and a friendly, collaborative clergy Chapter. We have six Benefices and twenty-six churches, in contexts from suburban, through small town and large village to tiny hamlets, as well as a school chaplaincy. Our multi-parish Benefices have larger town churches teamed with smaller rural churches, each having its Minister licensed by the Diocese. There is a variety of theology, spirituality and ways of doing church and we value and respect this. As we focus on mission for the common good across the whole Diocese, we are reviewing our Deanery Plan to develop our mission in rural contexts, church planting in new development areas and leadership training. It is anticipated and hoped that the Ministers appointed to all our Benefices will play an active part in bringing about creative change.



Marion de Quidt
Area Dean of Odiham



INTRODUCTION



We are a worshipping community with a passion to build the kingdom of God right here in Yateley.

Part of the Odiham Deanery in the North-East corner of Winchester Diocese, serving some 17,000 people alongside a Roman Catholic Church and a small Baptist Church, St Peter's would describe itself as an evangelical, charismatic, Anglican Church.

Yateley is well-situated offering good access to local towns, commuter links to London and the coast. There are good opportunities for leisure activities in the surrounding countryside. The town is spread out along the central main road that runs through it. Yateley is bordered by common land

including Yateley Common Country Park and Blackbushe airport. There is no well-defined town centre however, the church with its associated Charity shop, Discoveries, and the recently established Cafe 46, the proximity of two public houses and other food outlets makes the Church End Green area of the town a focal point. We believe that there is ample opportunity, given the central location, to further develop the footfall to and from the Cafe and Discoveries to increase our outreach into the community.

The original medieval church was the subject of an arson attack 40 years ago. Whilst the bell tower was preserved, the extensive re-build has enabled a flexible layout internally, allowing many of the clubs and outreach projects a good space to operate within.

The church has two main congregations meeting on a Sunday morning, one in the church building and another in the hall at the local comprehensive school.



OUR VISION

We aim to be:

- **whole-hearted** - with a passionate and committed faith that pursues a Christian life-style
- **open-hearted** - welcoming others and embracing change
- **broken-hearted** - sharing God's compassion for our community and the world in which we live

As you will appreciate, with such high ideals we still have a long way to go!

Our Parish Action Plan needs reviewing and we would like to do this with the input of our new incumbent. As we discussed what kind of person we wanted as our new incumbent, we feel we have begun to identify where God is leading us as a church. The themes that came through were:

- We want to grow in our spirituality as individuals and as a church. We want to be challenged by God's word, deepen our relationship with Jesus, and worship through the Spirit;
- We are a church that practices collaborative ministry. We want to develop and use people's gifts more widely;
- We are passionate about sharing Jesus and want to be able to do that more effectively;
- We want to be increasingly good stewards of all the good gifts that God has given us;
- We want to be more effective in the way that we care for each other and the community;
- We are excited by the opportunities that our community hub offers and want to increase our mission through them;
- We want to build on and extend our links within the community.
- We recognise our need to engage with all people in the town but would like to be better at encouraging families into the church

We enjoy a supportive relationship with the neighbouring benefice of Eversley and Darby Green.



OUR CHURCH LIFE

St Peter's is a welcoming, busy and outward looking church. Our heart is to worship God and to share the Good News of Jesus with our community.

Worship

- We are evangelical and charismatic. We aim to learn from the bible and to encounter God in our worship.
- We have an 8am 'traditional' service in the chapel each Sunday. The service alternates between Service of the Word and Holy Communion.
- St Peter's main morning congregations meet on two sites on a Sunday morning – there is one service in the church building and another at a local school (known as 'The Centre'). Each congregation has a regular attendance of 80-120 worshippers. People tend to mostly attend one congregation on Sunday mornings, but everybody works together to support the church's outreach and activities. We regularly meet together for combined celebrations.
- There are 'All Age' services once a month at each site and children's groups meet on the other weeks. We regularly celebrate Communion.
- Music is led by musicians who are gathered into bands.
- Each congregation has its own lay leadership team which works with the vicar to support the pastoral and worshipping life of the community.
- Services in the Church are usually informal Services of the Word. The monthly 'All Age' service welcomes families bringing children for baptism. Baptismal families and friends can nearly double the number of worshippers. Everybody works together to welcome the families who come into the church to thank God for their new child.



- ‘The Centre’ was started as a way of making space for growth in the church building and has met in a local school hall for over 30 years. Over 50 people, mainly from ‘The Centre’, camp at New Wine each year and this has influenced how this congregation worships on a Sunday morning. Services generally include the required elements for a Service of the Word but the structure of each service is loosely based on the New Wine Model of ‘Worship, Word and Response.’ About 20% of those attending on a Sunday morning at ‘The Centre’ are children.
- Sunday evening services have a monthly pattern. ‘Deeper’ is a time of intimate sung worship, ‘Prayer Stream’ is dedicated to prayer, and we have a healing service, which usually includes communion.
- Small groups are really important in a larger church and currently about 120 people regularly attend a home group and others are engaged in discipleship pods.

Children, families and youth

- We have a real heart to see families come to know Jesus. We really want to welcome and include people of all ages in the church but we are aware that we have proportionately fewer families and young people worshipping with us than is balanced. We have lots of contact with families and young people during the week but very few of them decide to follow Christ. This is something we really want to change.
- There is a team of more than 50 volunteers who work in Sunday groups, toddler groups, baby groups, Messy Church, ‘Who Let the Dads Out’ and a thriving schools ministry. At the moment the volunteer role overseeing this work is vacant.
- We have recently appointed a paid Youth and Community Worker and she is working to build up our youth ministry. We have a regular ‘Soul Food’ youth group on a Sunday morning and ‘Y Friday’ meets on a Friday evening.
- We have a strong relationship with the local Church Primary School, Cranford Park, and have a number of church members on the Governing Body, including Foundation Governors.
- We have an ‘Open the Book’ team working with local schools.



Community

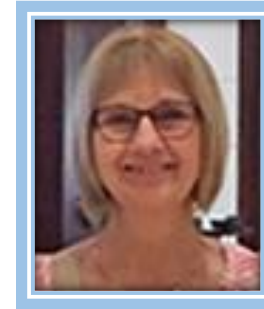
- St Peter's is outward facing. We have two businesses that are near the church building. They give us a way of serving our community whilst raising an income for missional work. 'Café 46' serves good quality food and coffee and 'Discoveries' is a charity shop. The buildings are bright, modern and always busy and buzzing. Teams of volunteers and paid staff make sure the shops are well run and welcoming.
- We are increasingly seeing ways in which they can be used to share God's love, for example, 'Alpha' meets in the café, and many of those who attending Alpha have come into contact with the church through the two shops.
- We would like our new incumbent to oversee and direct these two businesses but would expect the day-to-day running and management of them to be delegated to others.
- In the period Oct 2018 -Sept 2019 there were 20 Baptisms, 4 Weddings and 6 funerals.
- We have many missional activities during the week, some of which invite the community into the church building and others take the church out in to the community. Please see our website and Appendix 2 for more details.



OUR TEAM

Linda Hoskins – Churchwarden first elected 2019

Linda has lived in Yateley for a number of years. Worshipping mostly at the Centre, Linda is also involved with the welcoming and prayer ministry teams.



John Moloney – Churchwarden first elected 2016

John has lived in Yateley for over 30 years. Worshipping mostly at the church building, John is also involved with the sound and projection teams.



Mark Vernon – Church Manager (20 hours)

Mark has been Church Manager for over 7 years. A former Youth Worker and Churchwarden at St Peters, Mark has a wealth of experience to bring to the role.



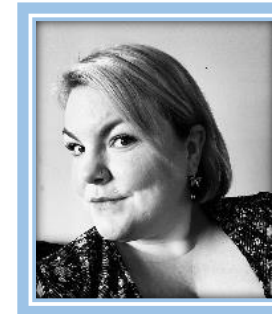
Maureen King - Parish Administrator (35 hours)

Maureen has been our Administrator for almost 3 years. A regular worshipper and worship leader at the church building. She keeps the parish running smoothly.



Kat Vaughan – Youth and Community Worker (full-time)

Kat has been at St Peters for just over a year as Youth and Community Worker. She brings a fresh view to our youth and community ministries.



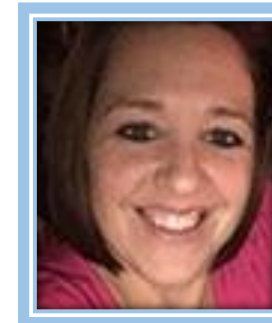
Sue Harkins – Discoveries Team Leader (full-time)

Sue has been the Manager at Discoveries for a number of years. A regular worshipper at the church, she also helps to run one of our Hospitality teams at the church.



Tracy Norman – Café 46 Team Leader (full-time)

Tracy has been Team Leader in the Café for several years and has contributed significantly to developing the café and its menu.



An indication of our other paid staff and our extensive team of volunteers is given in Appendix 3.

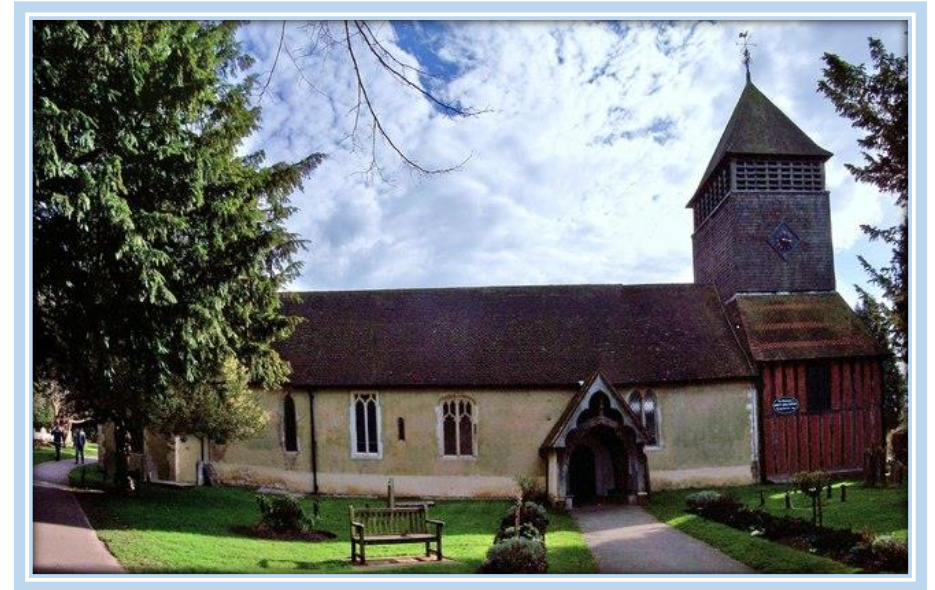
OUR ORGANISATION

Our PCC nominally consists of the following members –

- (Vicar), 2 Wardens, Treasurer, Secretary (non-voting)
- 4 elected Deanery Synod representatives,
- 12 elected members (based on 4 new members being elected each year on a 3-year rolling programme).

We have the following PCC Subcommittees –

- Standing Committee
- Safeguarding
- Health and safety
- Finance
- Fabric
- Building Project
- Business committee
- Mission Support



We have spent the last eight years developing our vision for a community hub and bringing it to fruition. The Community Hub is based around Church End Green and includes the church, Discoveries and Café 46. Our vision is to actively reach out to the community via Discoveries and Café 46 whilst still offering a wide range of activities in the church building.

We have recently been working on a project to develop and improve the church building, in conjunction with the quinquennial report, and the opportunities for outreach to the community that we could explore with upgraded facilities. The items identified for development are shown in Appendix 5. We have chosen to consolidate these works into a single project package to maximise the potential and hopefully minimise disruption. Since much of the church infrastructure dates from the re-building work after the fire 40 years ago, we have given this project the working title of 'Project 40'. It is hoped that we can involve the wider Yateley community in the project as we seek to develop our community hub concept. We are currently at the stage of having some detailed scope documents drawn up for these works.

THE HOUSE

The Vicarage is a large, well-maintained, detached home with four bedrooms (one ensuite), two reception rooms, kitchen and separate study. There is a large single garage and a garden laid primarily to lawn. The Vicarage is in a conservation area and set back from Church End Green.

Between the Vicarage and the Church lie The Old Vicarage and Chaddisbrook House. The latter houses the Church offices, Café 46 and Discoveries charity shop.

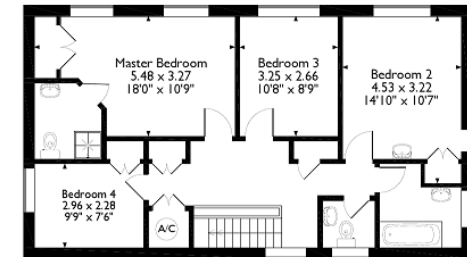
Yateley is a good place to live, we are in the district of Hart which consistently ranks as one of the best places to live in the country. We are surrounded by a large amount of beautiful heathland, most of which is protected from development because it is one of the last known habitats for a rare bird, the Dartford Warbler. Yateley has good access to the rail and motorway network. London, the coast and the New forest are all within reach for day outings.

The town has numerous clubs and societies for all age groups and we even have our own music festival, 'Gig on the Green', which allows the church uses the facilities to run a 'Gospel on the Green' event.

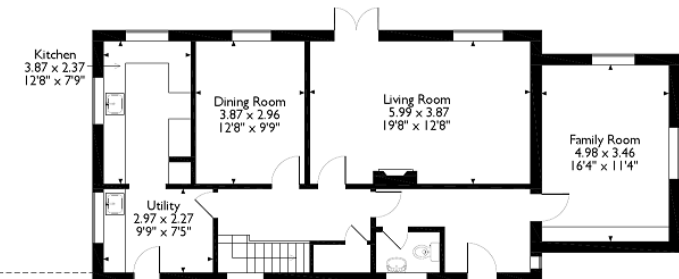
Yateley has good preschools, primary and secondary schools. There is a sixth form college at Yateley School and many teenagers travel to Farnborough 6th form, one of the best sixth form colleges in the country.



The Old Vicarage, Reading Road, Yateley
 Approximate Gross Internal Area
 Main House = 164 Sq M/1756 Sq Ft
 Garage = 20 Sq M/218 Sq Ft
 Total = 184 Sq M/1974 Sq Ft



First Floor



Ground Floor

Please note that the location of doors, windows and other items are approximate and this floor plan is to be used for illustrative purposes only. Unauthorized reproduction is prohibited.

ROLE DESCRIPTION

This Role Description should be read in conjunction with the vision, aims and priorities set out in this profile. We are expectantly praying that God is calling a leader for us who will help us to seek God's will for our individual lives and for the community of Yateley.

We believe God is calling a leader for St Peter's who will share our vision for outreach to the community and will earnestly seek God's will for our shared future.

The person should be ready to lead and develop a God-filled fellowship who are **broken-hearted** with concern for our community, **open-hearted** and **whole-hearted** in our desire to offer the love of Jesus to the people around us.

The vision and values developed during the pMap process in 2015:

To grow authentic disciples; To re-imagine Church; To be agents of social transformation and To belong together in Christ,

This needs to be looked at afresh and updated to be relevant to where St Peter's is today. Our new leader will need to be ready and willing to rise to this and the other challenges that St Peter's has to offer.

We believe God is calling a leader for St Peter's who:

Spirituality

- Is prayer and Spirit led, Bible based that can use these qualities to develop and challenge us.
- Is humble and mature with a realistic recognition and acceptance of their own gifts.

Leadership and collaboration

- Is an effective leader and good communicator, skilled in encouraging and developing others, in a collaborative way following God's direction
- Is committed to working within a multi congregational church
- Is an inspiring leader and team player who empowers others to grow the church.
- Has the gifts of oversight, direction and delegation necessary in relation to our two businesses and knows how to use such gifts wisely.



Evangelism and engagement with social justice

- Will share our passion for outreach to the community and will earnestly seek God's will for our shared future.
- Is excited by the mission field in Yateley.

Stewardship finances and parish organisation

- Has a good understanding of church finance and organisation with the ability to oversee others

Worship and preaching

- Has an enthusiasm for Spirit led worship and able to lead us to a place where we can encounter God and be changed by Him.
- Is a gifted preacher and bible teacher who can adapt their style to inspire all members of the church and community.



Discipleship learning and nurture

- Is keen to grow genuine disciples of Christ and encourage us in our collective and individual journeys.
- Will build and encourage lay leadership across all ministries in the church and community.

Pastoral care

- Has a strong pastoral heart and will proactively lead, encourage and support church members in exercising their gifts and calling.

Ecumenism and links with other bodies

- Is committed to co-operation with the local churches and the community.
- Will build upon the existing links with Cranford Park C of E Primary and other schools in the parish.
- Will fully participate in and contribute to the life of the deanery (including synod and chapter) and diocese, playing a positive role in the ongoing discernment of deployment and boundaries Primary and other schools in the parish.

The role description should always be read in conjunction with the [Guidelines for the Professional Conduct of the Clergy](#).

HOW TO APPLY

A full application pack, along with Terms & Conditions, is available from the Diocesan website, [here](#).

For an informal conversation about vacancies in the Winchester Archdeaconry, please contact:

The Ven Richard Brand
Archdeacon of Winchester 01962 710962
Richard.brand@winchester.anglican.org

Mrs Jane Hammond
Clergy Appointments Assistant 01962 710963
jane.hammond@winchester.anglican.org



Appendix 1

Pattern of services

| All Services | | | | | |
|------------------------|---------------|---------------|---------------|----------------|----------------------------|
| | | | | | Other Services tab |
| Date | 01-Sep | 08-Sep | 15-Sep | 22-Sep | 29-Sep |
| Sunday | SS6 | | | | Harvest |
| Theme | | | | | |
| 8am Service | HC | MP | HC | MP | MP |
| | Derek | Faith | Derek | Peter R | Ian H |
| 10am Centre | | AA | HC | FW | |
| Celebrate | | | Sue Hobbins | | |
| Lead | | AA Team | Stuart | Desmond | |
| Preach | | AA Team | Sue Hobbins | Stuart | |
| Worship | | Andrew | John & Judy | Andrew | |
| 10am St P | HC | FW | FW + Baptism | HC | Harvest |
| Celebrate | Bp David | | Jane Leese | Paul Dunthorne | |
| Lead | Faith | David Jolly | Peter Ridley | John M | Kat (End of £10 challenge) |
| Preach | Bp David | Peter R | Ian H | Paul Dunthorne | Ernie |
| Worship | John & Judy | Maureen | David | Maureen | James |
| 6pm Eve Service | | | Deeper | PrayerStream | |
| Celebrate | | | | | |
| Lead | | | | Stuart Bailey | |
| Preach | | | | | |
| Worship | | | | | |
| Wed 11am | 04-Sep | 11-Sep | 18-Sep | 25-Sep | 02-Oct |
| Service | MP | MU HC | MP | HC | MP |
| Lead/preach | Stuart | Derek | Peter Ridley | Derek | Ernie Ong |

10am St Peter's



| Date | 01-Sep | 08-Sep | 15-Sep | 22-Sep | 29-Sep |
|------------------------------------|----------------------|----------------------|-------------------|----------------------|----------------------|
| Sunday | SS6 | | | | Harvest |
| Service | HC | FW | FW + Baptism | HC | Harvest |
| Celebrate | Bp David | | Jane Leese | Paul Dunthorne | |
| Lead | Faith | David Jolly | | John M | Kat |
| Preach | Bp David | Emie | Ian H | Paul Dunthorne | Emie |
| Lead Musician | John & Judy | Maureen | David | Maureen | James |
| Reading | Hebs. 13:1-8,15,16 | Philemon 1-21 | 1Tim.1:12-17 | 1Tim.2:1-7 | 1Tim.6:6-19 |
| Reading 2 optional | Luke 14:1,7-14 | Luke 14:25-33 | Luke 15:1-10 | Luke 16:1-13 | Luke 16:19-31 |
| Hospitality Team | Team 2 | Team 3 | Team 4 | Team 5 | Team 1 |
| Service Host | Ian and Christine Hu | Karen and Neil Jones | Michael Head | Sue HarkinsElizabeth | Colin and Jill Derry |
| Team members | Carolyn Hill | Roger Lamb | Sylvia Gillbrand | Hanni Salamon | Gail Ollason |
| | Christine Cooper | Janet Lamb | Mark Vernon | Maureen Stilton | Heather Parrish |
| | Nicki Ray | Sue Anderson | Bennie Vernon | Mike Stilton | Teresa Harmsworth |
| | Jan Richardson | Pete Anderson | Maggie Knevitt | Janet Young | Angela Latham |
| | Sandra Fairbrass | Judy Dowling | Joyce Fisher | Carolyn Chapman | Carol Sallis |
| | | | Liz Lee | | |
| | | | Julie Jenner | | |
| Reader 1 | | Margaret Keane | Meryl Branson | Karen Jones | Liz Lee |
| Reader 2 | | Diane Martin | Roger Lamb | Margaret Keane | |
| Prayer | | Janet Young | Sue Anderson | Lynn OMahony | Janet Beardmore |
| | | | | | |
| Projectionist | | Neil Jones | John Moloney | Neil Jones | David Beardmore |
| H.C. Assist Team | | | | Team Stook | |
| Prayer Ministry Co-ord. | | | | | |
| Church Lock Up | | | | | |
| First Aider | | | | | |
| Children's group leader - 6 to 11 | | Anna Drake | Gail Ollason | | |
| Children's group helper | | Judith Grey | Brenda Stook | | |
| Session number | | | | | |
| Family room | | | | | |
| John Moloney - Sound | | Chris Cole | Peter Moloney | Grayham Allin | Ian Hayes |
| Open screens for Sunday | Team 1 | Y Fiday | Messy Church Team | WLTD0 Team | Team 2 |
| Close screens after Sunday Service | David Beardmore | Alan Kinnaird | David Knevitt | | Peter Ridley |

| 10am at Yateley School | | | | | |
|------------------------------|--------------------|-----------------------------------|--|---------------------------------|-------------------|
| 2018 | 01-Sep | 08-Sep | 15-Sep | 22-Sep | 29-Sep |
| Theme | | | | | |
| Venue | Church End Green | Yateley School | Yateley School | Yateley School | Church End Green |
| Service | | AA | HC | FW | Harvest |
| Celebrate | | | Sue Hobbins | | |
| Lead | | AA Team | Stuart | Desmond | |
| Preach | | AA Team | Sue Hobbins | Stuart | |
| Main Reading | Hebs. 13:1-8,15,16 | Philemon 1-21 | 1Tim.1:12-17 | 1Tim.2:1-7 | 1Tim.6:6-19 |
| Other Reading | Luke 14:1,7-14 | Luke 14:25-33 | Luke 15:1-10 | Luke 16:1-13 | Luke 16:19-31 |
| Third Reading | | | Jer 4:11-12, 22-28 | Jer 8:18-9:1 | Jer 32:1-3a, 6-15 |
| Worship | | Andrew | John & Judy | Andrew | |
| Team Ldr | | Ross Grey | Simon Rowe | Billy Feanney | |
| Set Up | | Desmond Thuambe | David Double | Andrew Fanner | |
| Welcome | | Linda Hoskins and Stuart Bailey | Rachel Hatch and Lisa Cole | Sid & Loretta Logsdale | |
| Coffee | | Sylvie Collins and Karen Harryman | Sharon and Chris Spence | Katie & Henryk Urban | |
| Prayer Min Team Leader | | Martine | Pauline | Hazel | |
| Prayer Ministry | | Pauline, Linda, Katie, Judy | Martine, Sally, Linda, Rebecca | Sheila, Linda, Sylvie & Tony PJ | |
| Reader | | All Age | Vera | David R | |
| Chalice | | | Stuart, Faith, Rebecca, Roland, Suzie | | |
| Prayer | | All Age | Rebecca Ware | stuart Bailey | |
| Sound | | Jas on Quant | Rob Joyner | Rob Joyner | |
| Projector | | Roland Portsmouth | Roger Howes | Roger Howes | |
| Mini Church | | | Rachel Hatch & Helen | Rachel Hatch | |
| Children's Church | | | Nicola Thompson, Becca Morris < Gill Weeks | Chris Spence, + Faith Bailey | |
| Soul Food | | | Faith & Ranjan | Kat & Becca | |
| Lifts DB | | | | | |
| First Aid | | | | | |
| Lunch Time/ Afternoon Social | | | | | |

Appendix 2

Groups/ Activities

St Peter's offers a wide range of activities for both members and the wider community. Some of the activities for families on offer during the week include:

Messy Church - once a month on a Saturday afternoon

Who Let The Dads Out? - once a month on a Saturday morning

Little Miracles - for mums or dads with their babies on Monday afternoons

Wayfinders - a toddler and pre-school group on Monday mornings and Wednesday afternoons

Y-Friday - for young people in school year 5 and above on Friday evenings

Soul Food – for young people in school year 5

For adults we offer:

Integrity - for men, monthly pub nights, regular curry evenings, talks, walks, visits and men's breakfasts

Inspire - for women, also offers regular curry evenings

Home groups - meeting both during the day and in the evenings

Chillax - for 18-21yrs every other Monday evening

Kitchen Choir - every Thursday evening

Home Alone - drop-in club for those alone in their home on the second Monday of each month

Knit & Knatter - every Friday morning

Mothers' Union - second Wednesday afternoon and second Tuesday evening of every month

Table Tennis Club - every Tuesday 2-4pm.

Cakes at the Lakes - at Hampshire Lakes Retirement Village on the third Wednesday of each month

Last Tuesdays

Art Group – every Tuesday

Appendix 3

The wider team

As mentioned above, we are very blessed to have other paid staff, mainly associated with the shop and café and we are also blessed by an extensive lay ministry including:

- 2 Discoveries Assistant Team leaders - 3 days each
- 1 Discoveries sales assistant – full time
- 2 Discoveries Saturday staff – 6 hours each
- 2 café 46 Assistant team leaders - 3 days each
- 2 café 46 Saturday staff – 6 hours each
- Facilities operative – 25 hours
- Office volunteers
- Discoveries volunteers
- Café 46 volunteers
- Derek Burden Retired priest
- Ernie Ong, Ian Hayes, Peter Ridley - LLMs - licensed 2009 & 2010
- Katie Urban – LLM licenced to Winchester diocese in 2019
- Stuart Bailey - LLM licenced in 2019
- Faith Bailey and Ranjan Emmanuel – Ordinands
- Volunteer Treasurer (qualified) - 20 hours

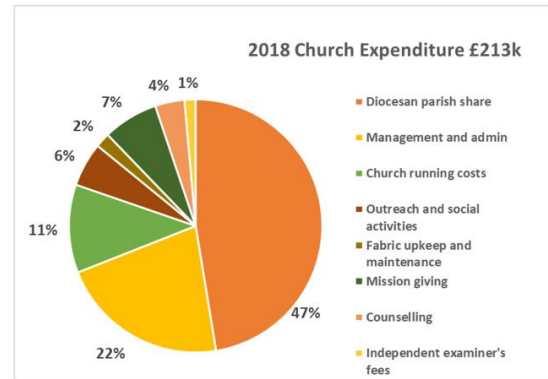
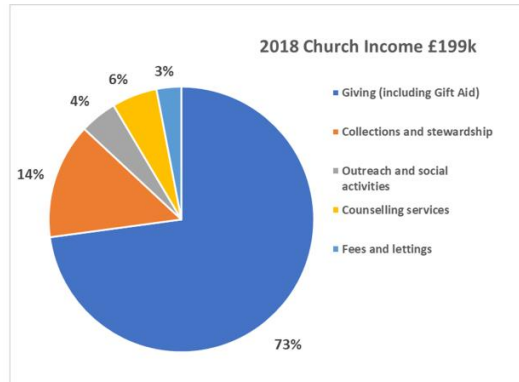
Appendix 4

Our Finances

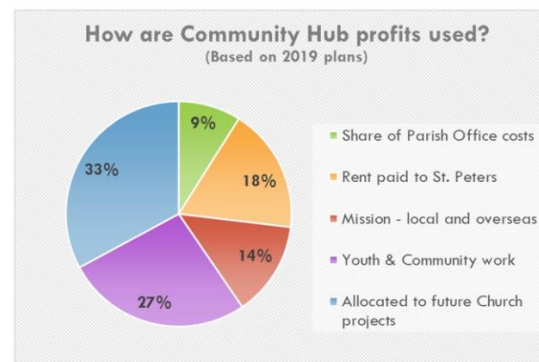
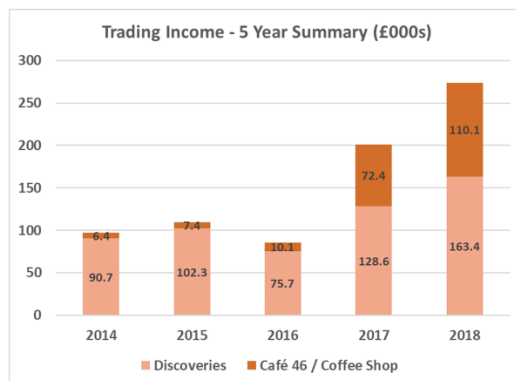
St. Peter's Church is in a very healthy financial position, thanks largely to its trading activities, particularly its charity shop, Discoveries. In 2016, a near £1m building project was completed to refurbish Chaddisbrook House (next to the Church), providing more modern accommodation for the Parish Office and Cornerstone Counselling, extending floor space for Discoveries and adding Café 46 as a new business. In combination, Chaddisbrook House facilities are known as the Community Hub. A summary of St. Peter's 2018's financial performance follows:

| <i>All figures in £000s</i> | Church | Trading | Com.Hub | Total |
|--|------------|------------|------------|------------|
| Income | 199 | 273 | 42* | 514 |
| Expenditure | 213 | 190 | 9** | 412 |
| Surplus / (Deficit) | -14 | 83 | 33 | 102 |
| * Donations / fundraising 22 plus "internal rent" 20 | | | | |
| ** Loan interest 6 and fundraising expenses 3 | | | | |
| <i>Note: Table excludes investment income and gains, non-cash items such as depreciation (31 in 2018), and other year-end accounting adjustments</i> | | | | |

Church income is fairly stable, with 87% in 2018 coming from Church members and congregation. The most significant element of Church expenditure (47%) is the Diocesan parish share. Analyses of both follow:



Both St Peter's businesses have experienced rapid growth in recent years, as shown in the 5-year summary below. Both are staffed by a combination of paid and volunteer staff. Discoveries is highly profitable, Café 46 less so, but their success is not measured just in financial terms. Both have a huge impact on the local community, indeed St Peter's is committed to giving something back to the community, as evidenced by the use of profits chart below:



Looking ahead, we are repaying a £400k Building Project loan to the Diocese until 2026. Around £44k is paid annually, funded from the businesses, fundraising and regular giving. We are committed to developing our Youth and Community ministry. Plans exist for a potential £1.2m refurbishment of the Church and its historic tower. Sufficient cash is held at all times to cover 3 months' expenditure across all St. Peter's activities and businesses.

Appendix 5

Project 40 Scope

Project 40 is the working title for an extensive programme of works based around the quinquennial report and our desire to improve the facilities within the church building. The key areas identified as part of the project include:

- Upgrade of the church heating system (already completed)
- Redecoration of the church building
- Revision of the existing toilet facilities to include better provision for our disabled members and visitors
- Upgrade work to the church entrance
- Redecoration/ remodelling of the church 'hall' space
- A revamp of the church kitchen facilities to support church events
- Update/ revision of the moveable partition system in the main worship space.
- Revision of the church roof drainage and discharge systems
- Repurposing of the existing 'Oasis' meeting spaces
- Investigation of reported issues with the bell tower foundations

'From his fullness we have all received, grace upon grace.'
John 1:16

Diocesan Office, Wolvesey, Winchester SO23 9ND

t: 01962 710963 w: www.winchester.anglican.org



@CofEWinchester



www.facebook.com/CofEWinchester