

Rector

Sherbornes with Pamber



in the Deanery of Basingstoke and the Diocese of Winchester

Parish Profile and Role Description

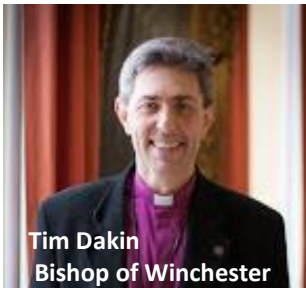
Welcome to this Benefice Profile and Role Description...and welcome to the Diocese of Winchester!

At the heart of our life here is the desire to be always **Living the Mission of Jesus**. We are engaged in a strategic process to deliver a mission-shaped Diocese, in which parochial, pastoral and new forms of pioneering and radical ministry all flourish. Infused with God's missionary Spirit we want three character traits to be clearly visible in how we live:

- Passionate personal spirituality;
- Pioneering faith communities;
- Prophetic global citizens.

The Diocese of Winchester is an exciting place to be right now. With a grant of £4.3m from the Strategic Development Fund, we are investing in missional projects across the diocese which are aimed at **strategic growth for the common good**. We pray that, if God is calling you to join us in his mission here, he will reveal this to you clearly as you consider this post.

<https://www.winchester.anglican.org/winchester-mission-action/>



Tim Dakin
Bishop of Winchester

*From his fullness
we have received
grace upon grace
John 1:16*

+ Timothy Winter



David Williams
Bishop of Basingstoke

x David Basingstoke



Richard Harlow
Area Dean of
Basingstoke Deanery

Basingstoke Deanery

Basingstoke is ranked 11th best place to live in the country. The major town of Basingstoke has a population of 105k and around it lies some of the most beautiful villages and countryside in Hampshire. The town is planning to increase its population by 30k in the next 15 years. Employment is amongst the highest in the country. Different communities get on well together. Basingstoke & its environs is a good place to live.

The Deanery chapter is amongst the largest in the Diocese with 17 parishes and chaplains from the Town Centre Chaplaincy, hospital and hospice. We are working on a Deanery Mission Action Plan that will see us sharing mission amongst young people, and pioneering ways of sharing the Good News of Jesus on new housing estates as well as in the older settlements. We have great ecumenical networks, and growing partnerships with other churches.

We want enterprising clergy, who are team players, to join our chapter. We offer a rich depth of experienced leaders, great lay leadership, ecumenical prayer networks and a generous and diverse spiritual life. We have challenging times ahead, but a strong willingness to support our clergy and their families in the demands of ministry.

Contents

Page	Title
3	Welcome and Introduction
4	Introduction to our parish
5	Who we are and what are our challenges
6	Our strengths and opportunities
7	Our vision
10	Our local community is growing
11	Our church life
12	Outreach and evangelism
13	Prayer and discipleship
14	Youth and children
15	A typical month in our parish
16	Our team
20	Our Links
21	The Rectory
22	The role description
26	Our places of worship and meeting room
28	Facts and figures

Welcome and Introduction

Welcome to our parish profile and role description.

We are a Christ-centred, Holy Spirit led, prayer focussed, conservative evangelical church which sits under the sovereignty of God and the authority of His word.

We believe His word is alive, that his Holy Spirit transforms our lives, encouraging and driving our mission to build up His church in the love of Christ and to reach out to the lost in our parish and beyond.

We're praying God will provide us with a conservative evangelical who is skilled in expository teaching and will embrace the challenge of building on the firm, established foundations of the Gospel; A minister able to help us grow in maturity of faith and equip us to confidently proclaim Jesus and the hope of salvation to our villages and new developments.

If you think you might be the person for us, we look forward to receiving your application. We'd love to hear from you!



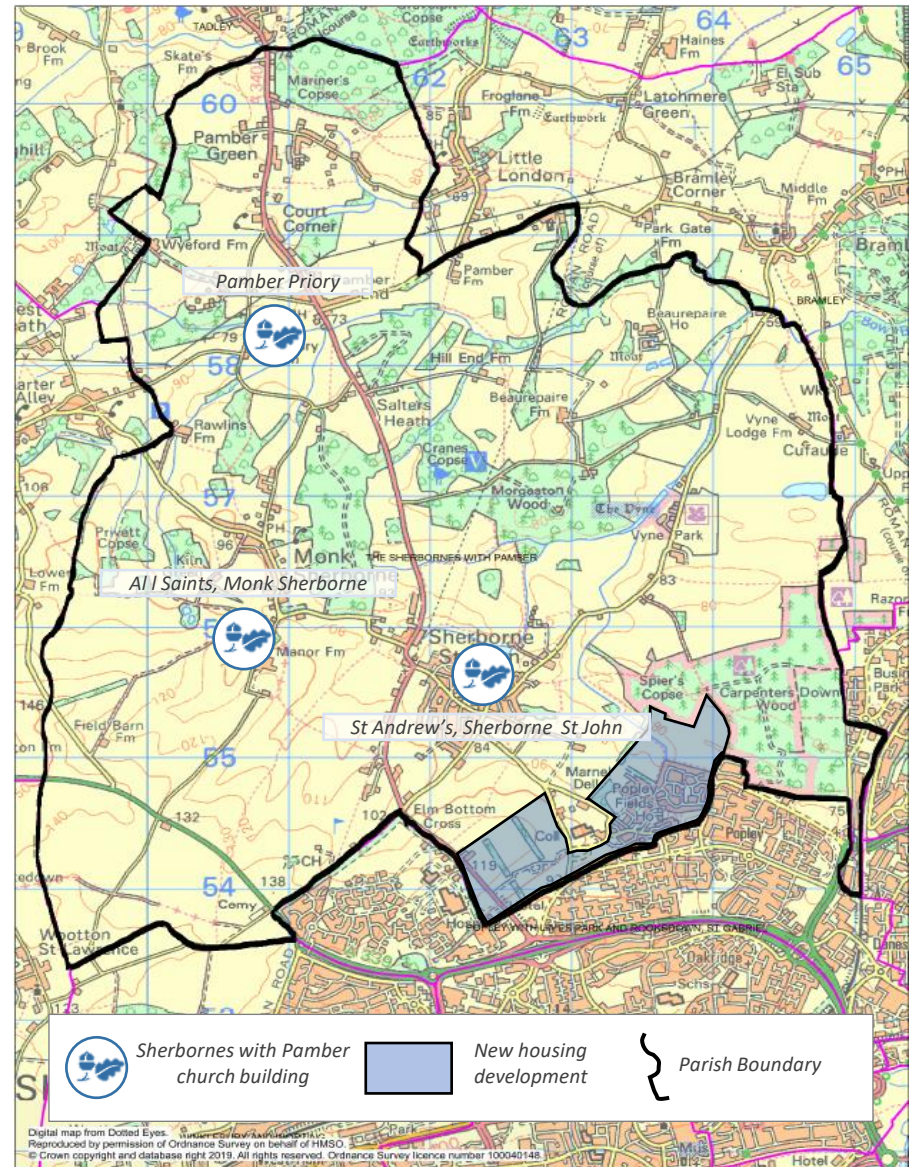
Our Parish

Our parish is located to the north west of Basingstoke and is changing rapidly. The three traditional, rural villages have, over the past few years been joined by new housing estates built on the outskirts of Basingstoke. While the villages are perhaps older in age group, the newer developments are largely occupied by young families bringing a more youthful, energetic and dynamic feel to the parish of Sherbornes with Pamber.

We have an exciting opportunity for a new minister to lead us in effective evangelism to a large, diverse and growing population.

“The harvest field is plentiful but the workers are few” - Matthew 9.

The Sherbornes with Pamber PCC has requested, on the grounds of theological conviction, that arrangements be made for it in accordance with the House of Bishops’ Declaration on the Ministry of Bishops and Priests.



Who we are and our challenges

We are:

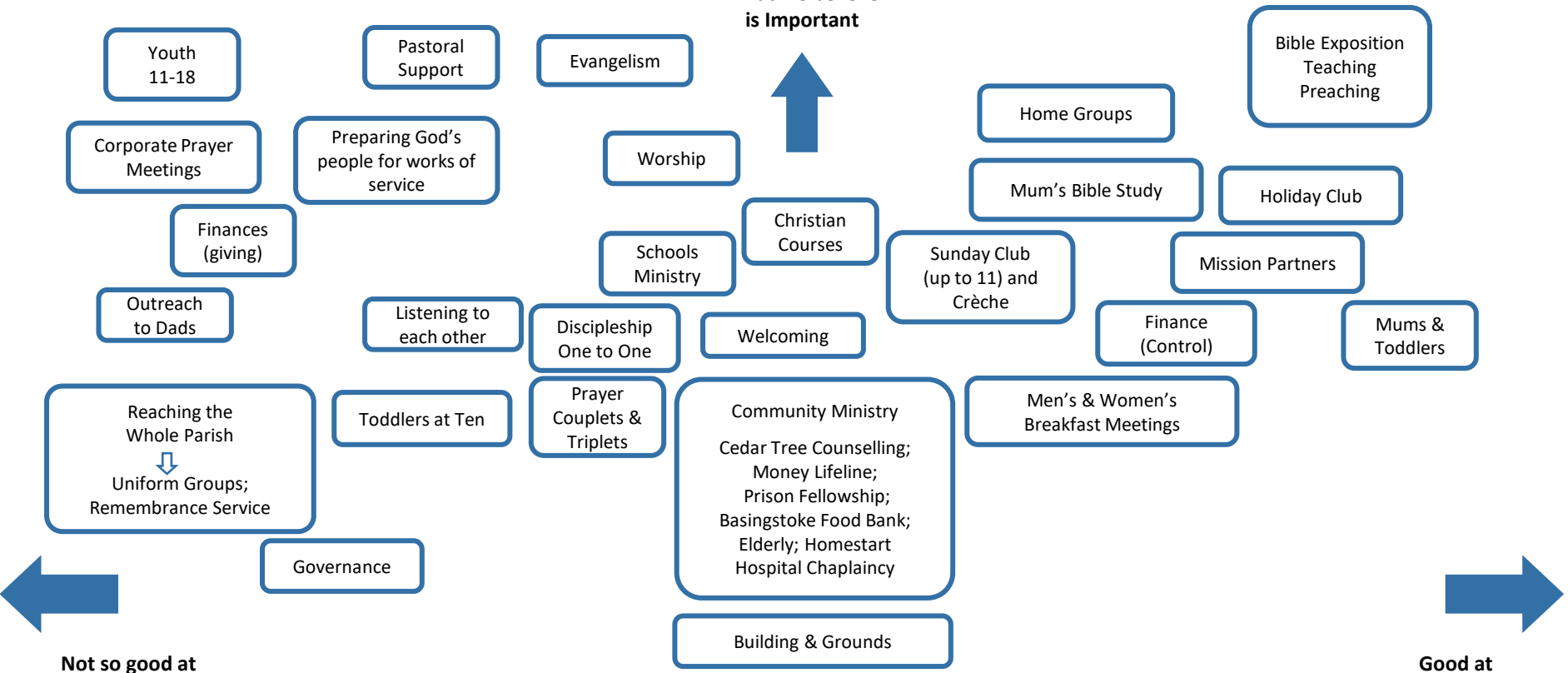
- A diverse, Christ-centred, conservative evangelical church.
- A united benefice with one Parochial Church Council.
- A friendly family who care for one another, welcoming to all.
- Mission-oriented with many in the church family actively serving in local mission projects.
- The Gospel is great news! We thrive on a spiritual diet that includes faithful, clear and engaging expository Bible teaching.
- We love people and we love Jesus and want to make him known to both our local communities and further afield. There is so much work to be done!
- We love all ages. We strive to invest in our children and young families, to teach them to love and know the Lord Jesus personally.
- We encourage one another through our central prayer meeting, prayer triplets, home groups, and men's and women's breakfasts, as well as at our weekly Sunday services.
- We have trained lay workers who are keen to serve.

Our challenges:

- Our parish has changed beyond recognition in the past few years and the newer developments do not obviously see themselves as part of our parish. Our challenge is to reach out to make our church relevant to the growing population, particularly young families, within our parish boundaries.
- We have many mature Christians in our fellowship but also many who are new to faith or on the fringes of the church family. Our challenge is to help everyone in the church to grow in maturity of faith and build one another up in Christ.
- We have a challenge to develop and expand our pastoral care wherever needed.
- Engaging and retaining our teenagers within our church family is a challenge.

Our Strengths and Opportunities

What we believe is important



What we believe is less important

Our PCC have considered different aspects of our church life. Whilst all have value, we have sought to discern the relative priorities and what is working well and less well as we build His Kingdom in our parish. We hope it provides a feel for our church and its challenges and how God has blessed us.

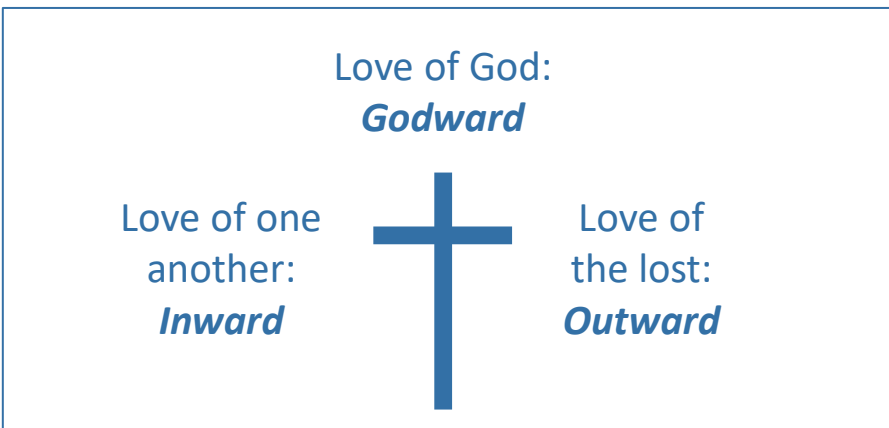
Our Vision

“To make Jesus known and build up the church in faith and love”

Our vision is to build on our strong foundations of Bible teaching and see growth in three areas:

- a) In our love of God;
- b) In our love of one another;
- c) In our love for the lost in our parish and beyond.

There are many challenges in achieving this; but we pray and trust that in God’s strength, with the love of Christ binding us together, and with the wisdom and guidance of the Holy Spirit we will be a growing church bound up in our love of Him.



a) Godward

Our vision is to be a church which promotes maturity in faith by deepening our commitment to listen to God, who speaks and reveals himself in the person of Christ Jesus, in teaching and learning from His living word through the ministry of the Holy Spirit.

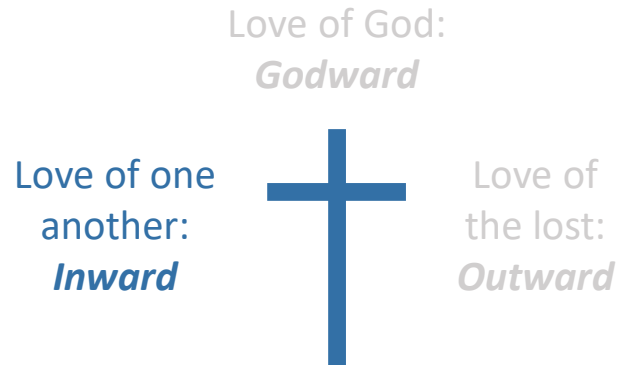
Priorities to realise our vision:

- *Prayer and Praise:* We want to see growth in a passionate belief that through prayer and praise, we come to a living God who hears, sees and acts to save and restore us.
- *Teaching:* We want to build on our strong foundations to see an increase in teaching across all ages to inspire us to become more devotional with a passion to hear and apply God’s word in our daily lives.
- *Dependence on God:* We long to see a deepening of our love and knowledge of God, increasingly being led by the Holy Spirit and learning to depend upon Him.

Our prayer is that our new Rector will love the Word of God, as we do: 2 Timothy 3 v 16.

Our Vision

“To make Jesus known and build up the church in faith and love”



b) Inward

Our vision is to be a church that seeks to grow in building each other up in faith - learning to love, listen and serve one another. As our fellowship grows in maturity of Christ we pray we become enthusiastic and effective disciple makers.

Priorities to realise our vision:

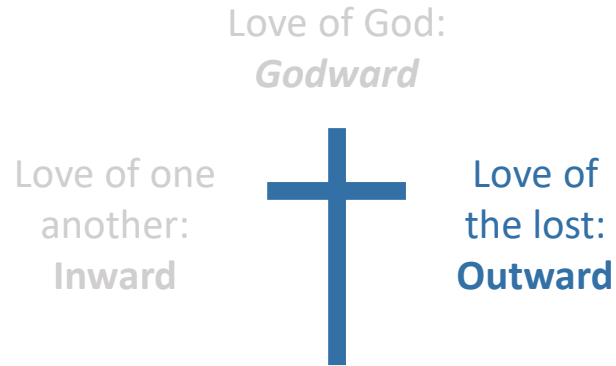
- *All church Ministry:* We want to see a growth in recognising, encouraging and supporting God’s people and their God-given gifts, for works of service. Ephesians 4: 11-13

- *Pastoral care:* We want to grow in Christian maturity by coming alongside and encouraging one another in existing small prayer groups and house (growth) groups and developing our pastoral care for one another.
- *Church Prayer:* We recognise the need for church prayer meetings but have struggled to find the right setting meaning they are not well attended. We would like to see the meetings overflowing and joyful so that all we do is underpinned in prayer.
- *Passing on the baton:* We love our young people and are passionate about our ministry to children, teenagers and young families. We want to see the next generation won for Christ and help them to grow in their own personal faith to maturity in Jesus.
- *Finance:* We want to be a church which prayerfully relies on God to provide for all aspects of our ministry but would like to move to being funded by regular giving rather than relying on annual gift days.

Our prayer is that our new Rector will encourage us in a spirit of unity as we follow Christ Jesus with one heart and mouth to glorify the God and Father of our Lord Jesus Christ: Romans 15 v 5.

Our Vision

“To make Jesus known and build up the church in faith and love”



c) Outward

Our vision is to be a church which is on fire to make Jesus known and glorified in our local community and surrounding area.

Priorities to realise our vision:

- *Making Jesus known:* There are so many people in our local community who don't know Jesus. We want to increase our outreach particularly to the new estates, building relationships and ministering to their needs.

- *Reaching out - mission:* We love to see church members involved in supporting and praying for global and local mission. We want to see more emphasis on preparing us for service.
- *Reaching out - our community:* We want to be a church which is accessible, friendly and welcoming. We want to grow where we meet the local needs (e.g. mums and tots/marriage courses/elderly) and be seen as a vital part of the local community by getting alongside people at their points of need so we can bring to them the good news of Jesus Christ.
- *Reaching out - encouraging occasional members:* We need to develop strategies to engage with fringe members of the church to encourage them to a full and lasting faith in Jesus.

Our prayer is that our new Rector will teach, train and equip church members so they are motivated and enabled to be sent out to confidently share the Gospel message: Matthew 28 v 19.

Our Local Community is growing

Our parish lies in North Hampshire a couple of miles north of Basingstoke – a bustling large town with good rail links to London and other parts of the country. We have two distinct communities in our parish:

The Villages:

Sherborne St John is the largest village. It has a modern village hall, a working men's club, a popular pub and a large sports pavilion with playing fields and tennis courts. There is a Church of England primary school with 110 pupils.

Pamber End, Pamber Green and Monk Sherborne are small rural villages/hamlets. Monk Sherborne has a pub and village hall. There is a LEA primary school near Pamber End with 178 pupils



The new housing developments

The housing stock has a variety of house and flat sizes and a mixture of social, part owned and privately owned houses/flats.

There are many more families and single young people living in these areas compared to the villages. There are about 1,722 homes already built with another 810 yet to be completed by the end of 2020. In the 2011 census the population of the parish was calculated at 4,316. Since then many more houses have been completed with around 5,800 living in the Parish which is expected to grow to 7,500 over the next few years. There are few public amenities other than a senior school which has community sports facilities & meeting rooms to hire, which the church has used on occasion.

Parish Changes

In response to wider changes, the diocese is reviewing the allocation of clergy so it is possible that our parish may expand in the near future.

Our Church life

Our church life priorities were identified in our Parish Mission Action Plan (Pmap) created in 2015. These are:

Bible teaching

“All scripture is God breathed and is useful for teaching, rebuking, correcting, and training in all righteousness.” 2 Timothy 3.

We aim to be Bible-based in all that we do and we accept the need to submit to our Lord’s authority and sovereignty in every aspect of our ministry.

We do this in a number of ways;

- **Home Groups** – meet fortnightly during term time for Bible study, prayer, fellowship and informal pastoral care.
- **At every church gathering** – We begin with a Bible passage – PCC, Prayer meetings, Standing Committee meetings, PCC sub-group meetings etc.
- **Small Groups** - There are a number of 1:1 Bible and informal prayer groups which members of the congregation organise.

How we want to see this grow:

We want to see training lay workers to handle the various genres of scripture and to provide opportunities for Home Group leaders to improve their Bible handling skills. We also want to see every member of the fellowship in a Home Group.



Outreach and evangelism

“Then Jesus came to them and said “All authority in heaven and on earth has been given to me . Therefore go and make disciples of all nations, baptising them in the name of the Father and of the Son and of the Holy Spirit, and teaching them to obey everything I have commanded you.” Matthew 28

We recognise that this is a responsibility of both the individual and the wider church family whereby we seek to prayerfully bring the word of God to the lost within our parish and beyond.

We seek to do so by:

- **Training** our members to be able to explain the gospel clearly and effectively when they have the opportunity.
- **Communicate** effectively with those parts of the parish where we previously have had little contact.
- **Events** which enable our non-Christian friends to come and get to know us, and to hear a clear and straightforward explanation of the gospel.
- **Christianity Explored courses** (and other Christian courses) are run in a variety of settings.
- **Local outreach**, Mothers and Toddlers, Marnel Lodge Care Home, Elderly coffee mornings, Marriage course.
- **Mission Partners** – We support mission partners in Nigeria, Bolivia and London primarily through our home Groups. We support them financially and with prayer and regular contacts of encouragement and fellowship.

How we want to see this grow: We see this as a major opportunity and challenge for us. We want help to develop and deliver new strategies to reach out and engage with the residents in the new estates.



Prayer

“If you believe, you will receive whatever you ask for in prayer” Matthew 21

We believe prayer is the engine through which God works and is therefore of paramount importance in all that we do. We pray whenever we meet but specifically:

- **Central Prayer Meetings** – our central fellowship prayer meeting is held before our Sunday worship meeting. We are also trialling other times in addition to this to attract more people to come along.
- **At all church meetings** – Prayer is a central part of all our gatherings e.g. PCC, Home Groups, men's/women's breakfasts, PCC sub group meetings etc.

How we want to see this grow:

We want to increase attendance at our central fellowship prayer meetings, actively encourage people to meet up informally to pray, and promote prayer for church family priorities in our home groups by disseminating relevant prayer information.

Discipleship

“..your faith is growing more and more and the love every one of you has for each other is increasing.” 2 Thessalonians 1

By prioritising discipleship we are emphasising the importance of growing maturity in Christ.

We do this in a number of ways:

- **Men's and Women's Ministry** – Breakfast meetings are held routinely throughout the year.
- **Home groups and one to ones** – aiming to grow discipleship by looking at practical applications of Bible teaching.
- **Church Weekend Away** - We have held a weekend away every two years with the aim of building up the church family.

How we want to see this grow:

We want to build on the above to see more emphasis on personal discipleship throughout the church fellowship.

Youth and children

““Let the little children come to me and do not hinder them, for the Kingdom of God belongs to such as these.” Mark 10

We prioritise and are committed to teaching the next generation about the glorious deeds of the Lord and to that end have a range of children’s and youth activities:



- **For pre-school age children** - there is a supervised crèche (ages 0-4) during term time.
- **For ages 4-14** - we run Sunday Clubs during term time in three age groups with an average attendance of 15-25 children.
- **Holiday Club** - We run a popular summer Bible Holiday Club for around 60 children, seeking to sow seeds of the gospel and to make contact with families who wouldn't normally come to church.
- **Village Toddlers' Groups** - We run two regular groups. One of these has a focus on outreach with the other encouraging church families.

How we would like to see this grow: We would love to see growth in all areas of our involvement with families and see this as both a major challenge and opportunity - particularly in the largely unreached new estates.

A typical month in our Parish

		Week 1	Week 2	Week 3	Week 4	Notes
Church services	St Andrew's, Sherborne	✓	✓	✓	✓	Every week
	St John		✓			Once per month
	All Saints, Monk Shreborne The Pamber Priory				✓	Once per month
Youth and Children	Sunday Club	✓	✓	✓	✓	Term time only
	Village Toddler Group	✓	✓	✓	✓	Every week
	Church Toddler Group		✓		✓	Every two weeks
Other church Meetings	Church Prayer Meeting	✓	✓	✓	✓	Every week
	Home Groups	✓		✓		Every two weeks
	PCC				✓	Typically every two months
	Prayer Triplets	✓	✓	✓	✓	No set pattern
	Men's / Women's breakfasts	✓				Normally two per term



Our Team



Peter Marrison

Peter is a Churchwarden. He and his wife have lived in Sherborne St John for 32 years. They have two adult children who grew up in the village and two lovely grandchildren. As well as serving the church family, Peter enjoys walking, gardening and family times. A little known fact is that he had a ride on the prototype hovercraft in 1960 at the Farnborough airshow!



Warren Trask

I love this church family. I'm married to Lisa and we enjoy walks, camping, board games and reading. I recently graduated from George Whitfield College in Cape Town, I joined as the Parish Ministry Assistant in Jan 2019 and I start a part time Masters at Oak Hill in Sep 19. I'm looking forward to having a partner in crime and am praying for you in the meantime.



Tim Aslet

Tim has lived in the Parish for 17 years and is married to Pippa. Tim is one of our Churchwardens and plays in the church band. "It gives me great joy to see people develop their trust in Jesus and take hold of the freedom won for them on the cross". In his spare time he likes cycling, cooking, gardening and going to the cinema with his son, Sam.



Wendy Howe

Wendy has lived in the parish for 13 years and has been the Administrator for 5 years. "I enjoy the variety the role brings and it's a privilege to serve and represent the church family. I spent 11 years working as an executive PA in the Civil Service which is ideal training. I am a keen walker and enjoy learning to paint in water colour."



Val Hayter

Val has lived in Monk Sherburne for 22 years and has responsibility for the day to day care of All Saints church. 'I love serving our church and being part of the family of Christ in Sherborne with Pamber.



David Cullum

David has lived in Pamber Green for 47 years with his wife Jenny, and looks after Pamber Priory for the PCC. 'I am fascinated by the colourful history of Pamber Priory and have shown many interested visitors the treasures of this wonderful building.'

Some more of our team



Nick Harding

Nick has been involved with the church since moving to SSJ 20 years ago, particularly helping with the finances of the PCC and Parish Trust. "My wife Lynda and I teach 8-11s in Sunday Club to understand that Jesus is God's Son sent to save His people." I enjoy playing cricket and going to the theatre.



Andy Spence

Andy and his family have been members of the church for more than 20 years. Andy is secretary to both the PCC and Parish Trust and serves on the Standing Committee. He has been an occasional preacher over the past 15 years and regularly leads services. When allowed out to play he escapes into the world of Star Trek, preferably with a glass of wine.



Jenny Cooke

Jenny acts as treasurer for the PCC having been a chartered accountant in practice before retiring 5 years ago. She and her husband have lived in SSJ for 30 years, have two grown up children and enjoy birdwatching and other wildlife. Jenny loves being with the elderly of the village and hopes to spend more time with them in the future when her children and grandchildren need her less.



Steve Howe

Steve has lived in the village for 13 years. Married to Wendy they have two grown up children and one daughter in-law. He has various roles in church including acting Chair of PCC. "I love to serve in the church, I'm becoming a more accomplished guitarist in the band and am passionate about bringing the good news of Jesus to those living in darkness."



Robert Bowen and Pippa Aslet

Together they head up the youth and children's work including Sunday clubs, summer holiday club, children's Christmas services and other activities. Pippa is married to Tim and has a son Sam and Rob married to Ali and they have 3 children, William, Thomas and Isla.

Even more of our team



Barbara Irving

Barbara loves getting alongside women especially young mums to encourage them and offer the hope of the Gospel. Barbara has a Master's degree in Theology and Counselling and is now involved in Women's ministry, Mothers and Toddlers outreach and runs a Christian counselling service for the community. She is passionate about: the gospel - its power to transform lives, good exegesis, creativity & spirituality, painting, walking their spaniel Hector and being a granny.



Nick Elphick

Along with Caroline and our son Matt, I have been involved in St Andrews for the last 18 years. I am currently one of the Deanery Synod reps and am involved in other ways with our church. There is a wonderful happy family feel to our church life.

The Parochial Church Council (PCC) meets bi-monthly with 9 elected members plus co-opted officers, 3 deanery synod reps and 2 Churchwardens.

PCC sub groups meet regularly addressing Finance, Building & Grounds, Youth & Children, Evangelism & Outreach

The Parish Trust funds a Parish Ministry Assistant which is a training and development role, mentored and managed by the Rector. Warren joined us in January 2019.

Some of the things we get up to..



Our Links

We have a number of links with the local community which we see as key to fostering relationships and spreading the gospel. *“As I have loved you, so you must love one another. By this all men will know that you are my disciples, if you love one another.”*

Links with Children & Young People

We have a good relationship with the Sherborne St John Church of England Primary School (<http://ssi-school.co.uk/wp/>) and provide someone to talk at “Collective Worship” every Wednesday; about three times a term this takes place in church. We also visit The Priory Primary School periodically. We do not currently have any contact with the Everest Community College which is located in the estates on the edge of our Parish. Our previous Parish Ministry Assistant worked with a youth worker from a neighbouring parish to run a lunchtime Bible group.

Other Community Links

Members of the congregation assist at the monthly coffee mornings for the elderly held in the village hall. We have links with the local food bank with a 'hamper' placed in church each week to collect food. Members of the congregation also support other local Christian charities including Christian Counselling, Debt Advice, Prison Fellowship and Hospital Chaplaincy.

There is a local residential care home and we arrange a monthly service with hymns and a Bible based talk.



Sherborne St John Church of England Primary School

The Vyne: local National Trust property



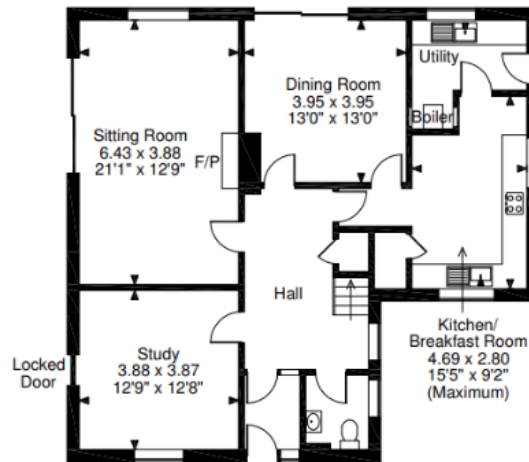
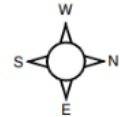
The Rectory

The Rectory, Sherborne St John

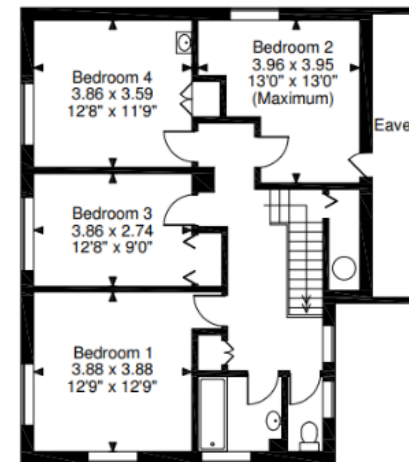
The Rectory is a spacious purpose built four bedroom 1970s house with a large, easily maintained garden and is in the village centre, a short walk from the church.



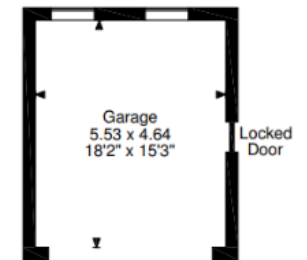
Vyne Road, Basingstoke
Approximate Gross Internal Area
Main House = 1,913 sq ft / 178 sq m
Garage = 276 sq ft / 26 sq m
Total = 2,189 sq ft / 203 sq m



Ground Floor



First Floor



Role Description (1/4)

This Role Description should be read in conjunction with the vision, aims and challenges set out in this profile.

We seek a Bible teacher who wants to equip God's church family to reach out and evangelise to our rapidly growing parish. As our new Rector we are looking for someone who:

Leadership and Collaboration

- Is an inspirational and compassionate servant leader, who will be a role model for evangelism and living for Christ.
- Is committed to working collaboratively with the elders and can lead and/or can be a team member when appropriate.
- Will, together with the Parish Ministry Assistant, develop strategies to achieve our vision and gain collaboration for their implementation.
- Provides effective leadership; is keen to involve other mature Christians in teaching and leading and is willing to resource and train others for the work of the ministry.
- Holds a complementarian view with regard to male leadership and who seeks to enable and encourage all

members of the church to identify, develop and exercise their gifts in serving Christ.

Worship and Preaching

- Is a Bible teacher, holding to the full Holy Spirit led inspiration of the whole Bible and its authority and sufficiency for all matters of faith and practice and committed to regular, systematic and consecutive Bible exposition as the main diet of preaching.
- Believes in prayer, both personal and together with others, as of vital importance for their ministry and the life of the church.
- Has a willingness to explore and develop other means of worship, e.g. sacrament, corporate worship, prayer ministry.

Role Description (2/4)

Evangelism and Outreach

- Has passion and sense of urgency to the spread of the Gospel and an eagerness to 'do the work of an evangelist' and enthuse others in this task.
- Will be involved in all aspects of evangelising, particularly to the largely unreached population on the new estates being built in our parish.
- Will therefore encourage and help equip the members of the church to engage in personal evangelism and will be supportive of church events and initiatives to bring the gospel to the lost in our parish and beyond.
- Will encourage and support those working and volunteering in Christian mission work in the community.
- Will have a real desire to make our church accessible, friendly and welcoming to our local community.

Spirituality

- Is a conservative evangelical filled by the Holy Spirit and is committed and able to uphold and defend core doctrines of Christian faith as set out in the 39 articles

of faith; in particular the authority of scripture, sin and grace and penal substitutionary atonement through the sacrificial death of Christ.

- Is committed to personal growth through their own personal discipline of listening to God through prayer and Bible reading/study/reflection and fellowship, and is passionate about developing the prayer life of the church.
- Holds orthodox views on human sexuality in line with the traditional teaching of the Church of England.

Role Description (3/4)

Discipleship and nurturing

- Is open and creative in their approach to Christian discipleship and spiritual growth, strongly committed to seeing God's people grow and mature in faith and use their gifts fully in the service of God.
- Will actively develop and encourage our Home Groups and their leaders, and other formal church groups in their discipleship.
- Will support ministry to all ages but with a particular desire to reach out to and 'pass the baton on' to the next generation by engaging with and encouraging ministry to children, youth and young families.
- Will help us to develop plans to nurture and disciple those occasional/fringe members of our church family in a more structured way.

Pastoral care

- Will nurture and encourage Christian growth promoting good pastoral care throughout the fellowship.
- Is approachable, hospitable and sensitive to varied pastoral needs of our church family and wider

community and willing to share pastoral care with others in the congregation, building a team to share pastoral care as appropriate.

Stewardship, finance and parish organisation

- Exhibits and proactively encourages generosity in the discipleship of church members in the giving of their time, gifts and money.
- Will encourage a biblical view of giving and through prayer, teaching and encouragement will continue to ensure we are a church which trusts that God will continue to provide for all our ministry activities.
- Brings and displays the proven ability to plan, organise, manage, chair meetings and communicates effectively with the Churchwardens, and others.
- Effectively manages the Parish Ministry Assistant and the Parish Administrator, on behalf of the PCC, setting targets and carrying out appraisals annually.

Role Description (4/4)

Ecumenical and links with other bodies

- Will be involved with local schools and proactively serve as a Foundation Governor for Sherborne St John C of E Primary School.
- Actively encourages the support of our global mission partners.
- Fully participate in and contributes to the life of the deanery (including synod and chapter), diocese and collaborates with other local churches.
- Encourages those members in our church family who are actively involved in a variety of outreach activities in the community.

This role description should be read in conjunction with Guidelines for the Professional Conduct of the Clergy

Our places of worship and meeting room

St Andrew's – Sherborne St John

The parish church in the centre of the village dates back to the twelfth century but features many later additions. In recent years the heating, lighting, electrics, chancel, kitchen and toilet have all been upgraded. We have recently installed a new audio-visual system. The seating capacity is 180 adults in the pews, with room for some extra chairs when needed.

There is a peal of six bells which is normally rung before Sunday service.

The churchyard is closed except for the internment of parishioners' ashes. There is a separate 'open' cemetery for burials a short walk from the church.

The Parish Room, Sherborne St. John.

There is a pleasant parish room attached to the Rectory which can accommodate up to 30 people. The Parish Room is used for meetings, crèche, outreach preparation and prayer meetings.



Our places of worship

All Saints Church in Monk Sherborne is about half a mile from the village centre and is surrounded by fields with a farm on one boundary. The church dates back to the twelfth century with few alterations since the 14th century when the wooden tower was built. It seats around 80 people and recent maintenance work has included new tile supports for the chancel roof. There are no kitchen or toilet facilities. There is a peal of five bells which are normally rung once a month before the main service. The bells were recently repaired and re-hung. The churchyard is open.

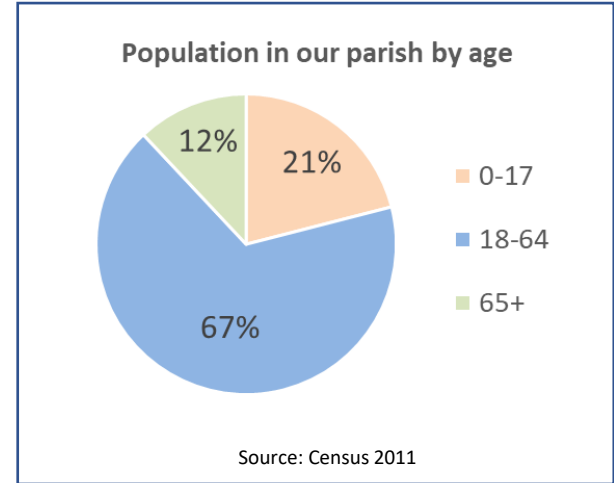
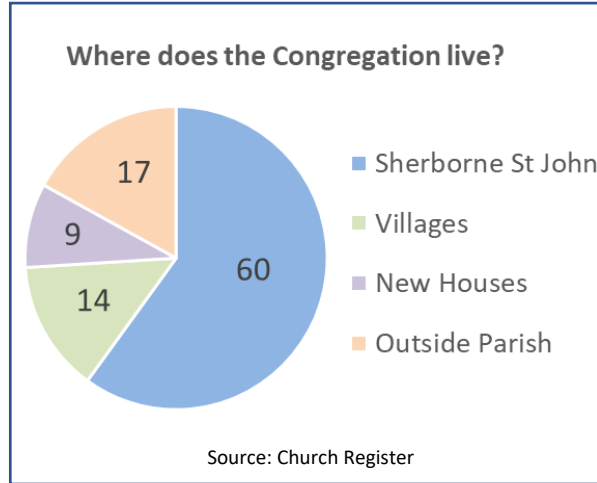
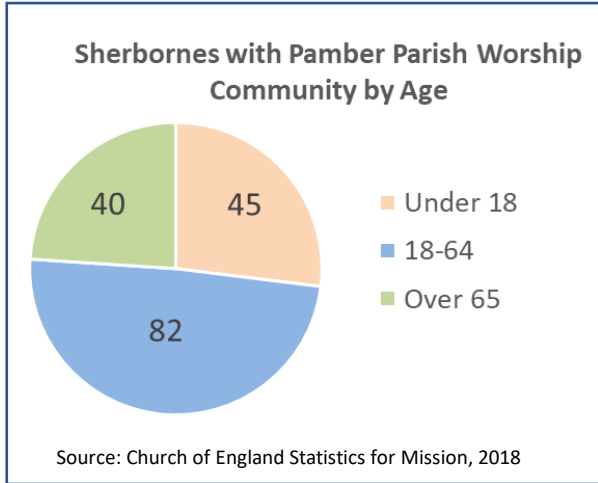
The roof is a major concern and will need costly repairs in the next few years. We have appealed to the parish for someone to project lead this work.

Pamber Priory is a small church which was once a cell of the Norman Priory of St Vigor at Cerisy-la-Foret in Normandy. It fell into disuse in the 14th century when most of the Priory was dismantled and the stone used in other local buildings. The church has a high ceiling and, apart from a couple of ancient tombs, is very plain. The church and surrounding land is owned by Queens College Oxford and the church is maintained by them.



Facts and Figures

Church and parish demographics



Church activity and finances

2018	
Funerals	8
Baptisms	2
Weddings	2
Electoral Roll	109
Worship Community	167
St Andrews Sunday attendances	90 - 120
Other church Sunday attendance	12 - 24

